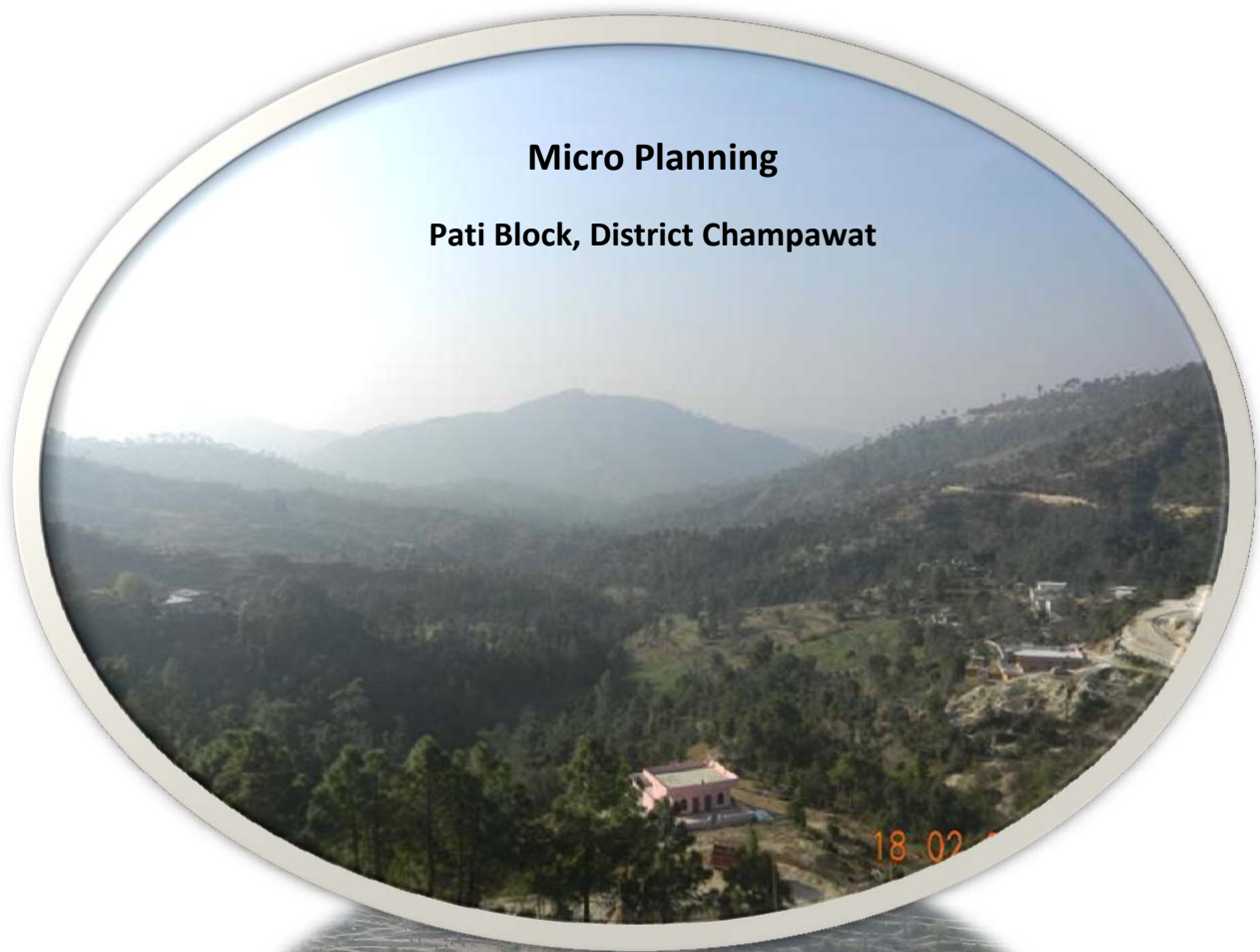


## **Micro Planning**

**Pati Block, District Champawat**



**ENVIRONICS TRUST, N DELHI**

**PARYAVARAN SANRAKSHAN SAMITI (PSS), PATI**

## **Contents**

|                                                                            |    |
|----------------------------------------------------------------------------|----|
| Background and Context.....                                                | 1  |
| Dynamics of Planning in the Changing Administrative Reforms Structure..... | 1  |
| Methodology to Capture Participatory Planning .....                        | 2  |
| The Planning Unit .....                                                    | 3  |
| Financing Planning – A Micro Perspective at Block Level .....              | 6  |
| Description Of Villages within the Planning Unit.....                      | 9  |
| Reflections from Village Level Interactions .....                          | 14 |
| Conclusion.....                                                            | 17 |
| 4-Axis Synthesis of Issues Emerging .....                                  | 20 |
| Way Forward.....                                                           | 22 |
| ANNEXURE – MGNREGA ACTIVITIES.....                                         | 28 |
| ANNEXURE – VILLAGE SUMMARIES, EXISTING SCHEMES &<br>FINANCES.....          | 32 |
| ANNEXURE – GROUP WORK .....                                                | 36 |

## **MICRO PLANNING APPROACH**

### **NILOTI-RAULMEL WATERSHED, PATI BLOCK**

#### **Background and Context**

Champawat District's Pati block has several socio-religious well known places like Reetha Sahib Gurudwara and Devidhura Temple where annual festivals and ceremonies are attended by thousands of people. This is the main route connecting the district to Haldwani and also to Almora. It is a block headquarter located on Lohaghat-Devidhura-Almora road connecting NH – 9 and NH - 109. The physiography is undulating and the climate is cold in winters to hot and humid during summers. The upper part of Pati town witnesses strong winds, especially around the Tehsil office and the main town road. The region is drained by Ratia Gad and several other smaller streams, forming part of the Ladhia catchment. Community protected forests can be seen with tree species like oak and utis – majorly water harvesters.

This area is also known as Assi Patti denoting 80 revenue villages. The basic wheat rice agriculture rotation and mostly organic farming is practiced. Small holder agriculture is persistent in the region. Over the years people have also turned to growing vegetables for own consumption. The earlier varieties of apple viz. Feny, Delicious, No.22, Golden etc. have disappeared from this region, right from Khetikhan to Mournala. Along this belt, Bedchula (towards Haldwani) is famous for its potato cultivation. Deodar is also seen alongwith Rhododendron trees in this belt. Khetikhan once also known for its diversity of potatoes has lost its traditional varieties like long paper, herchula, pila chapta etc. over the years. Agricultural diversity has slowly reduced where it used to be a mix of coarse grains like Manduwa, Jhingora etc.. Once talking to a farmer in the region about relevance of planting of hemp intercropping in usual food crops, it was a scientific reason – to keep pests at bay. Irrigation is limited to the lowlands and at many places canals exist but water sources are no longer protected and people look to government schemes for its revival.

#### **Dynamics of Planning in the Changing Administrative Reforms Structure**

Block planning is meant to be representative of what is required at the village level. But the funds available at the block level like MGNREGA can only be utilised in a better sustained

manner when the demand comes from the village institutions. In an effort to decentralise planning at the Gram Panchayat level, a portal called 'plan plus' contain sketchy details of things discussed in village meetings and uploaded on the portal. The idea of initiating planning at the smaller level (micro level, i.e. much smaller than a block and/or an administrative unit with an overarching outlook of a hydrological unit) emerged from the same very reasons of decentralisation and the changing dynamics and functioning of lower tier institutions like Block Panchayat – Gram Panchayat and Gram Sabha. While the problems in the villages are almost common but examples of large number of fish ponds dug up in this belt with state finances are now defunct because their site selection was poor and shows planning finances in bad light of common community knowledge. The result is investment on infrastructure with no productive 'community asset' or 'panchayat asset'.

Integrated farming is yet another idea which requires attention at both the grassroot level as well as at the scheme's level whether it is the resource component or the workforce payment component. Few examples can be seen in the region itself but upscaling it at a watershed level or at an administrative unit level has been difficult. Upscaling requires a planned effort and also avoid promoting monoculture in order to attain volumes or numbers. Micro planning is a thinking process where communities start thinking and eventually look for long term goals for their communities. It is not an end in itself but a process by which engagement of people is sought as well as issues are identified.

#### **Methodology to Capture Participatory Planning**

| <b>Key Movers</b>                      | <b>Tools</b>                       | <b>Tools</b>                  |
|----------------------------------------|------------------------------------|-------------------------------|
| <b>Primary information Gathering</b>   | Group Discussions at village level | Basic Questionnaire           |
| <b>Secondary information Gathering</b> | Plan Plus                          | Patwari<br>Agriculture Office |
| <b>Mapping Existing Resources</b>      | With GPS                           | Village Sketch                |
| <b>Map Generation</b>                  | Slope                              | Aspect                        |
|                                        | Infrastructure                     |                               |
| <b>Consensus Building</b>              | Common meeting                     |                               |

The methodology is a reflection of approach adopted for arriving at documenting the possibilities and overcoming existing problems by participative planning. Planning is a long process where communities feel the need for engagement as well as think judiciously to overcome the problems they face. While the field level engagements with the communities

raised primary concerns, understanding of planning as a process was also shared with them. It was intended to conduct small group meetings at the village level to bring out key determinants.

The current trend of participativeness of community into the planning process is through the 'Gram Sevak or Village Panchayat Officer', 'Gram Pradhan' and other prominent positions in the village democracy. Most of the minutes under the planning initiative of the government indicate a set trend of issues to be talked about without much of qualitative assessment of progress or development process. The other perception communities at large have ingrained over the years is to expect a scheme or programme everytime a visit is made to the village. While every organisation do not have the wherewithal to realise what is planned, Government can reach out fast to the people with the schemes on their annual plan mode – whether the schemes have been prioritised by the communities, is not the surety.

### **The Planning Unit**

People relate more closely with their resource usage outreach and their own administrative set ups as the schemes are bound within the boundaries of Panchayat. A watershed will be a culmination of many panchayats and may require eventual assessment over a long term. Selective village level understanding has to be developed and slowly move to integrate the watershed approach. On the same hand, it is also essential to import the scale and physiographic features of the whole watershed or keep it in mind while a village level approach is being taken in the short term pre-planning exercise. The watershed covering the area of interest is 2B1J3D3I spread over an area of 9.404 Km<sup>2</sup>. It partially overlaps and cut through the administrative boundaries of the panchayats as outlined in the table below. It is relevant here to mention that the Watershed programme in District Champawat is being implemented in Runigad watershed under the NRLM<sup>1</sup>.

The watershed comprise of Sakdena, Sirkot, part of Jadia Kamad, part of Niloti, part of Barait and Kota of Raulmel Panchayat and very small parts of Bhumwari, Maioli, Burush Khola and Holi Piplali.

---

<sup>1</sup> National Rural Livelihood Mission

## Demographic Data, 2011 Census

| Demographic Components               | Niloti Panchayat |              |               | Sakdena | Tak Balwari | Rolmail Panchayat |         |      |        |         |             |
|--------------------------------------|------------------|--------------|---------------|---------|-------------|-------------------|---------|------|--------|---------|-------------|
|                                      | Niloti           | Burush Khola | Dubar Kamlekh |         |             | Lara              | Rolmail | Kota | Barait | Mairoli | Jadia Kamad |
| Households                           | 45               | 37           | 18            | 92      | 63          | 22                | 72      | 6    | 26     | 16      | Uninhabited |
| Population                           | 220              | 200          | 91            | 525     | 260         | 114               | 359     | 49   | 163    | 84      |             |
| Males                                | 101              | 97           | 41            | 270     | 122         | 57                | 172     | 23   | 87     | 44      |             |
| Females                              | 119              | 103          | 50            | 255     | 138         | 57                | 187     | 26   | 76     | 40      |             |
| SC Population                        | 0                | 14           | 0             | 152     | 15          | 30                | 10      | 15   | 0      | 0       |             |
| Males (SC)                           | 0                | 5            | 0             | 81      | 4           | 15                | 4       | 6    | 0      | 0       |             |
| Females (SC)                         | 0                | 9            | 0             | 71      | 11          | 15                | 6       | 9    | 0      | 0       |             |
| Sex Ratio Derived (Total Population) | 1178             | 1062         | 1220          | 944     | 1131        | 1000              | 1087    | 1130 | 874    | 909     |             |
| Sex Ratio Derived (SC Population)    |                  | 1800         |               | 877     | 2750        | 1000              | 1500    | 1500 |        |         |             |
| Persons per family                   | 5                | 5            | 5             | 6       | 4           | 5                 | 5       | 8    | 6      | 5       |             |

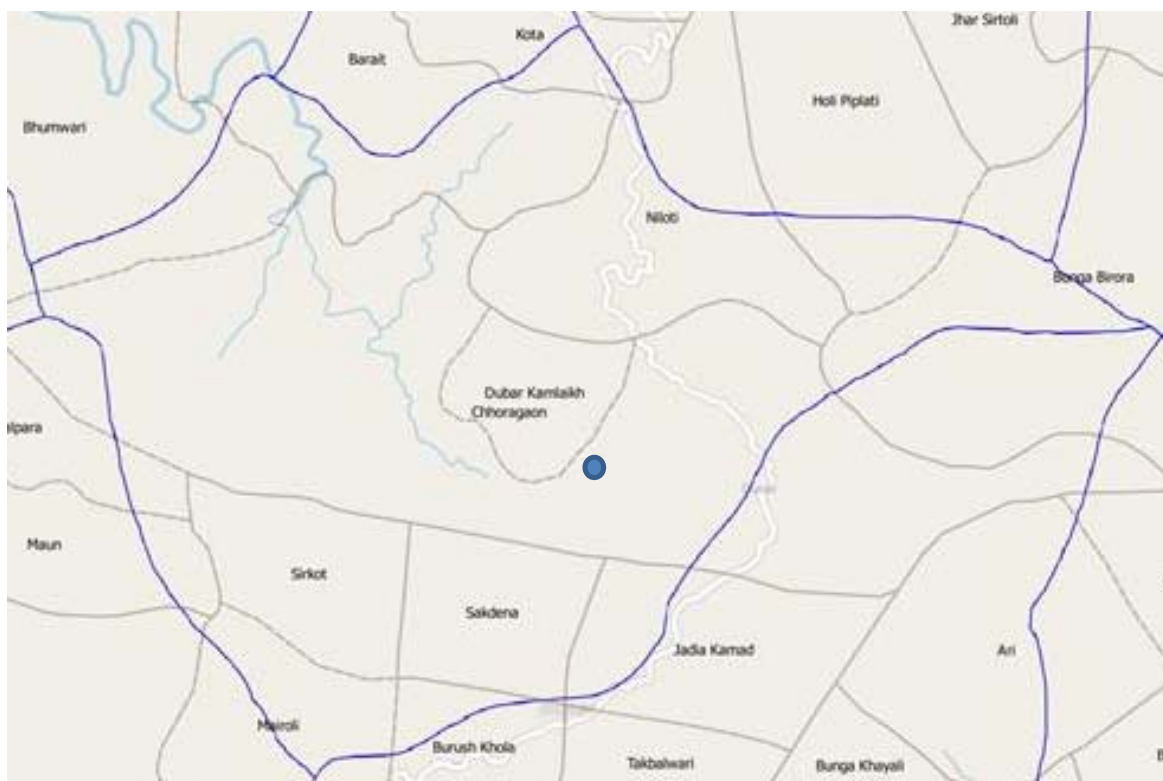
In most of the villages as shown in the table above, the sex ratio indicates less male population in the villages, more feminisation of agriculture is taking place which makes it further necessary for looking at gender sensitive options of livelihoods, employment and enterprise development. On the other hand this situation of high sex ratio indicates migration of male members from the village. The average family size is 5 persons. Sakdena has the highest scheduled caste population.

## Land Utilisation

| Land Utilisation Categories               | Niloti Panchayat |              |               | Sakdena | Tak Balwari  | Rolmail |         |       |        |         |             |
|-------------------------------------------|------------------|--------------|---------------|---------|--------------|---------|---------|-------|--------|---------|-------------|
|                                           | Niloti           | Burush Khola | Dubar Kamlekh |         |              | Lara    | Rolmail | Kota  | Barait | Mairoli | Jadia Kamad |
| Forest Area                               | 7.85             | 19.74        | 2.17          | 32.1    | 15.22        | 34.43   | 12.53   | 1.41  | 6.56   | 30.64   | 17.16       |
| Non-Agricultural Uses                     | 5                | 0.68         | 1.2           | 25      | 4.51         | 3       | 0       | 1.61  | 3.17   | 2.86    | 0.72        |
| Barren & Uncultivable Land                | 0                | 0            | 2.04          | 0       | <b>69.98</b> | 1.46    | 1.61    | 1.77  | 2.84   | 4.16    | 0.41        |
| Permanent Pastures and Other Grazing Land | 25               | 11.54        | 1.66          | 25      | 0            | 73.67   | 22.41   | 21.02 | 13.78  | 18.53   | 0           |
| Culturable Waste Land                     | 20               | 1.6          | 10.99         | 10      | <b>31.62</b> | 5.43    | 1.68    | 3.47  | 2.63   | 0       | 2.41        |
| Fallows Land other than Current Fallows   |                  |              |               | 0       | 0            | 3.24    | 3.47    | 0     | 0      | 0       | 0           |
| Current Fallows                           | 0                | <b>36.13</b> | <b>13.2</b>   | 0       | <b>34.82</b> | 0       | 2.21    | 3.23  | 1.47   | 5.63    | 7.56        |
| Total Unirrigated Land                    | 150              | 6.72         | 15.34         | 100     | 35.46        | 31.13   | 27.43   | 10.26 | 10.15  | 20.2    | 7.56        |
| Area Irrigated by Source                  | 23.25            | 0            | 2.01          | 7.34    | 1            | 10.01   | 3.41    | 0     | 3.17   | 0       | 0           |
| Geographical area                         | 231.10           | 76.41        | 48.61         | 199.44  | 192.61       | 162.37  | 74.75   | 42.77 | 43.77  | 82.02   | 35.82       |
| Irrigated area to area sown               | 13               | 0            | 12            | 7       | 3            | 24      | 11      | 0     | 24     | 0       | 0           |
| Forest Area to Geog. Area                 | 3.40             | 25.83        | 4.46          | 16.10   | 7.90         | 21.20   | 16.76   | 3.30  | 14.99  | 37.36   | 47.91       |

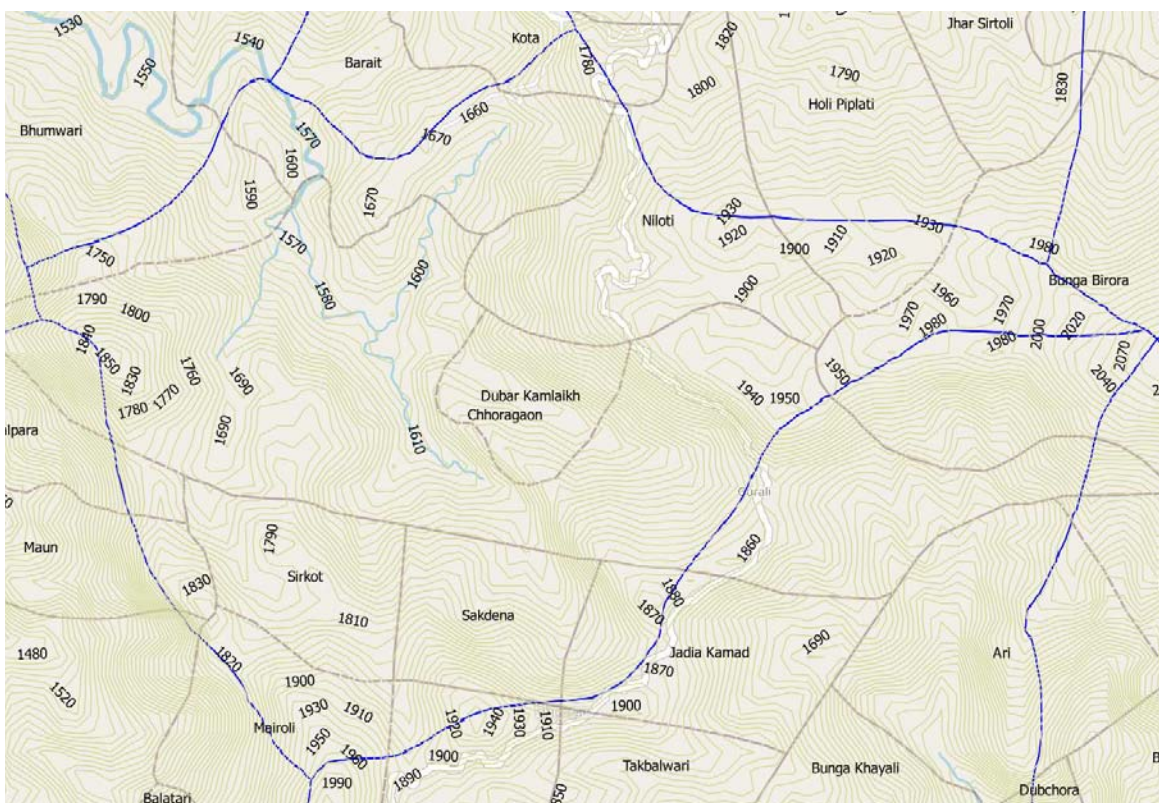
Area in hectares

The livelihoods dependent on agriculture or farming are dwindling and is seen clearly in terms of fallow lands as well as low irrigation coverage to the area sown. Hardly anything has been thought about drip irrigation for the interlinked water conservation-irrigation dual dependence for sustainability of water systems.



Map showing Revenue Village Boundaries and hydrological boundaries indicating need for resource-finance pooling for effective outcome





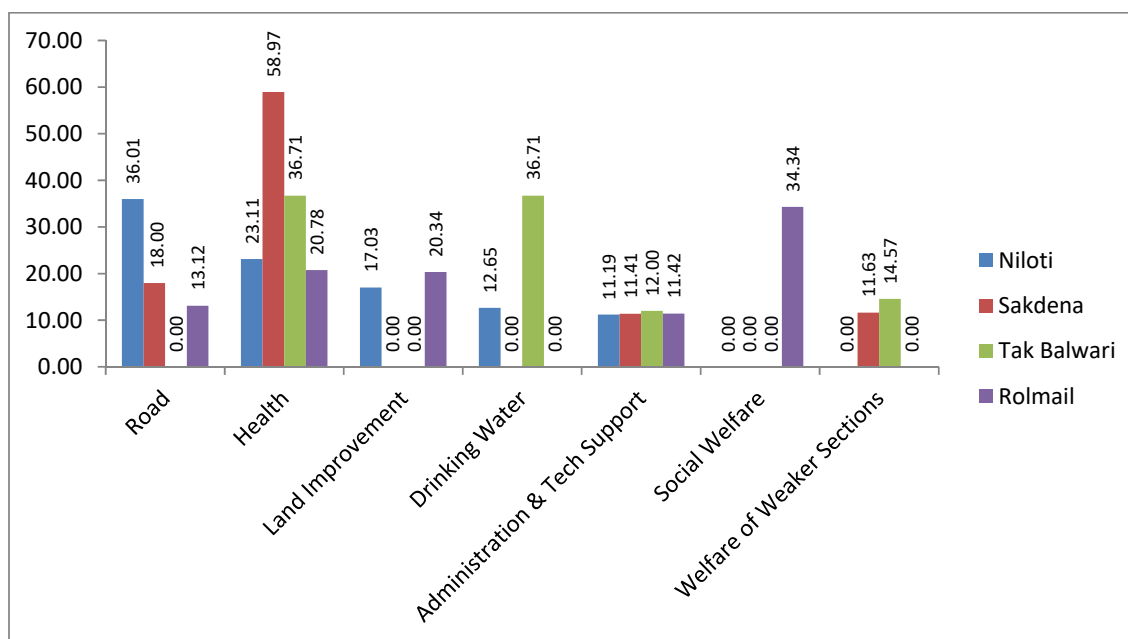
Contour map showing altitudinal variations in the watershed

### Financing Planning – A Micro Perspective at Block Level

With the end of 12<sup>th</sup> plan of the erstwhile planning commission, the states (especially special category states) are in a relative withdrawal phase i.e. streamlining of activities on performance based indicators and eventually helping the new entity (Niti Aayog) to frame strategies for the state and finance the activities. DRDA (District Rural Development Agency) which is an old government institution for rural development is an approving and verification authority for beneficiary scheme and benefit transfer into beneficiaries account directly from the centre. Majorly financing<sup>2</sup> is through 14<sup>th</sup> Finance commission and Third State Finance Commission. Let's look what has been approved over the last financial year and how much to get an idea about the range of activities, reflection of priorities

<sup>2</sup> Annexure - Village Summaries, Existing Schemes & Finances





(Rs. in Lakhs)

Untied funds have been granted to the respective gram panchayats over the year 2017-18, these have been compared in the graph above. The figures indicate percentages for a particular village under a specified category for which funds have been allocated. Keeping aside the rationality of fund allocation, the preliminary markers these funds reflect is whether financial planning corresponds to community needs. As these are untied funds, these have no stringent conditions attached to them, unlike tied funds which have specific conditions of fund utilisation and rationality behind allocation etc. Once we look at the sectors, say Health under which waste management, community toilets & bathrooms are allocated portrays a different picture of spending on health as an overarching sector, rather environmental sanitation and hygiene would have reflected a direct sector. Similar is the case with 'land improvement', the activities funded are tin sheds which refer to capital expenditure rather than actually improving the land fertility or erosion.

Convergence of schemes with MGNREGA has also been a focus. The activities from 2018-19 have been emphasised to be prioritised for water related works. In the last financial year, 2017-18 crop safety wall emerges as the prime issue for which people opted for securing their fields due to wild animals destroying their crops. Around 25 lakh has been spent in the four villages of Niloti, Sakdena, Tak Balwari and Raulmel. Tak balwari has the maximum number of 8 works under this category. Another activity is construction of cattle shed

which has an expenditure of under Rs.8 lakh for construction of 23 cattle sheds - highest being in Raulmel which has women milk cooperative followed by Niloti.

| <b>Works</b>                | <b>No of works</b> | <b>Labour Cost</b> | <b>Material Cost</b> |
|-----------------------------|--------------------|--------------------|----------------------|
| Cattle shed                 | 23                 | 4.87               | 2.83                 |
| Construction of Safety Wall | 18                 | 16.32              | 8.16                 |
| Construction of IAY House   | 1                  | 0.17               | 0.00                 |
| Individual toilet           | 11                 | 0.77               | 0.55                 |
| Pay jal pipe line           | 3                  | 2.17               | 1.38                 |
| Samprak marg                | 10                 | 9.54               | 3.96                 |
| Vermi Composting            | 12                 | 0.82               | 0.27                 |
| Peyjal Naula                | 6                  | 1.43               | 0.82                 |
| Total                       | 84                 | 36.08              | 17.97                |

Source: Work Expenditure Report, MGNREGA Portal, August 2018

In Sakdena, out of the the 81 works over the last 4 years which have been completed, high priority has been given to Water Conservation and Water Harvesting (18 activities) followed by Flood Protection (23 activities)

## Description Of Villages within the Planning Unit

### Village SAKDENA



Sketch Map of Sakdena Village

Sakdena is a village in Pati block where now 40 households are living, 26 households have completely migrated to other places. Around 30 households of these 80, commute frequently for work. The younger generation lives away from home for education and employment. In sakdena, one will find children, old age people, women and few young men. Those left behind are relatively poor and unable to practice agriculture, this results in situation of land becoming barren. Agricultural land is in the NW portion of the village. Depth of top soil varies considerably from less than 2 feet to around 4 feet at places. Soil type is 'sandy loam'. pH of soil near the settlements is around 6-7 and 7-7.5 in other places, it is found that potash is sufficient whereas phosphorous is less. On the hill slopes, there are small springs. Villages are normally surrounded by Civil Van Panchayat and Reserve Forest where people practice their rights.

Drinking water is available in the village through a water pipeline. Amongst coarse grains, Manduwa, is majorly sown and in pulses kidney bean and soyabean is sown; soyabean is majorly grown as an oilseed crop. Chilli, garlic, onion and termuric are few cash crops limited to a very small area. All these food crops provide food for quarter of a year, only

soyabean and chilli is sold rest all is consumed. Among vegetables, tomato-capsicum-brinjal-bottle guard, pumpkin, rai and spinach is grown. Among horticulture crops, Pear-Apricot-Plum-Malta are grown – only pear and other citrus varieties like lemon is sold. A broad estimate suggests that each family has around 10-15 plants/trees. In one of the habitations of Sakdena, 2-3 families have walnut trees, the produce is sold locally.

One striking example of collective help among farmers in each other fields is worth mentioning. Women in the village (Santukra habitation or tok) prepare compost and spread in the fields of different people. Those farmers having bulls help in tilling land of other farmers, also they help each other in sowing. In commons, people allow animals to graze.

### **Hamlets of Sakdena**

**Aati:** There were 50 households in the past, now only 25 live here, rest of the families have migrated. Due to constraints, these families practice agriculture over 3-4 nali (around a plot of 600 to 800 m<sup>2</sup>) where they grow vegetables & cash crops. All families have a skill in wood work and iron works and belong to scheduled caste. Few families (5-7) are engaged in iron works and want to continue that whereas few families have expressed their desire in horticulture. In comparison to Sakdena, here people have less inclination towards farming but more towards poultry, and the works of carpentry and iron.

**Santukra:** There were 20 households in the past, now only 15 families live here, rest of the four families have migrated. A broad estimate suggests around 8 hectare agriculturable land whereas only 4-5 hectare is being sown for wheat, buckwheat, maize, vegetables. Around 5 families have expressed desire for horticulture. People are interested in fisheries but that will require water to be lifted from the streams. In this village, apart from agriculture, walnut is grown by few families and small level dairy work is also done.

## NILOTI GRAM PANCHAYAT



Sketch of Niloti

Dubad Kamlekh: There are only 45 families living currently and rest have migrated. Many head of households commute between home and workplace. Many young boys and girls also commute for the purpose of education and work as well. Most of the village land is under agriculture (10 hectare of the total 20 hectare), the remaining land is barren (6 hectare is barren whereas 4 hectare is used for cattle grazing), there is a need to bring barren land under agricultural activities. Around 30 families are desirous of taking up some activity to

enhance their livelihoods viz. through vegetables, fruits and fisheries. Around 30-50% agriculture land is on EW aspect. Depth to top soil varies from 2-5 feet. Soil is sandy loam and is locally called Domat (Balui). The pH is around 6-7. Soil is low in phosphorous.

There are two water tanks, if water from the adjoining nallah is sourced and awareness is done in the village, many activities can be done.

Niloti: Currently, only 40 families live in the village. On an average every family has around 50 nali cultivable land but hardly 10-15 nali is cultivated and rest where people sow chilli, turmeric, ginger, maize and some manduwa<sup>3</sup>-wheat-rice. It leaves major chunk of cultivable land unused/fallow and parts of it used for grazing purposes. Water – many natural sources of water exist, there is a perennial nallah which flows by the side of the village, it is called Kalgani. This is utilised for irrigation and holds high utility for the farmers. The current water supply is scarce and require additional source, given some source of water – few people may take up fisheries. This village has primary, junior and high school whereas for intercollege students have to cover 5 kms distance. ANM centre is available in sakdena.

Among the cereal crops, mostly wheat and rice cropping pattern is followed in the village. Pulses include gahat, kidney bean, urad and oil seeds include soyabean and til. In cash crops, chilli, onion, ginger, garlic and turmeric is grown but on a very limited scale. These crops sustain village families for about 4-6 months. Few families also sell vegetables.

Like sakdena, people cooperate each other in doing farming by sharing their resources and manpower. No dairy exist here but milch cattle is found here and surplus milk is taken to ladhau market. Like other villages, problem of wild animal attack is found here too. The agriculture land is mostly valley montane land which has high productivity.

Buskhola: Out of the estimated 900 nali land (18 hectare) only 200 nali is under cultivation of vegetables, cash crops, maize etc. in small quantities. From the earlier 20 families living in this hamlet, around 15 families cultivate around 10 nali only and the rest is used for grazing of animals. By conserving water in the three available ponds in the village, sufficient water can be available for doing irrigation-fisheries-horticulture. Around 10 families are desirous of taking up the land based activities.

---

<sup>3</sup> Finger millet

## GRAM PANCHAYAT – TAK BALWARI



Tak balwari is a large village by hill standards, it used to have 160 households, over the last ten years, almost 25% of the families have migrated outside. Almost every member of the family works in the plain areas like Haldwani or Udham Singh Nagar to earn livelihoods. Migration from this village has mostly for education purpose. Those who do not have much financial resource have remained in the village. Its land is slowly turning barren. An estimated 17 hectare agricultural land is available but only 6-8 hectares is being cultivated. Other land is being used for animals to graze. Around 15-18 families have expressed interest in livelihood activities like horticulture and fisheries. There are 3 water tanks which need to be worked upon for routing water into them.



Village's agricultural land has major aspect on NW and S axis. The village has a primary school, junior school is one and a half kilometer away and intercollege is available in Ladhauri which is 3 kilometers away. The village is abutting civil and panchayat. For ANM centre, the village depends on Sakdina.

### **Raulmel GRAM PANCHAYAT**

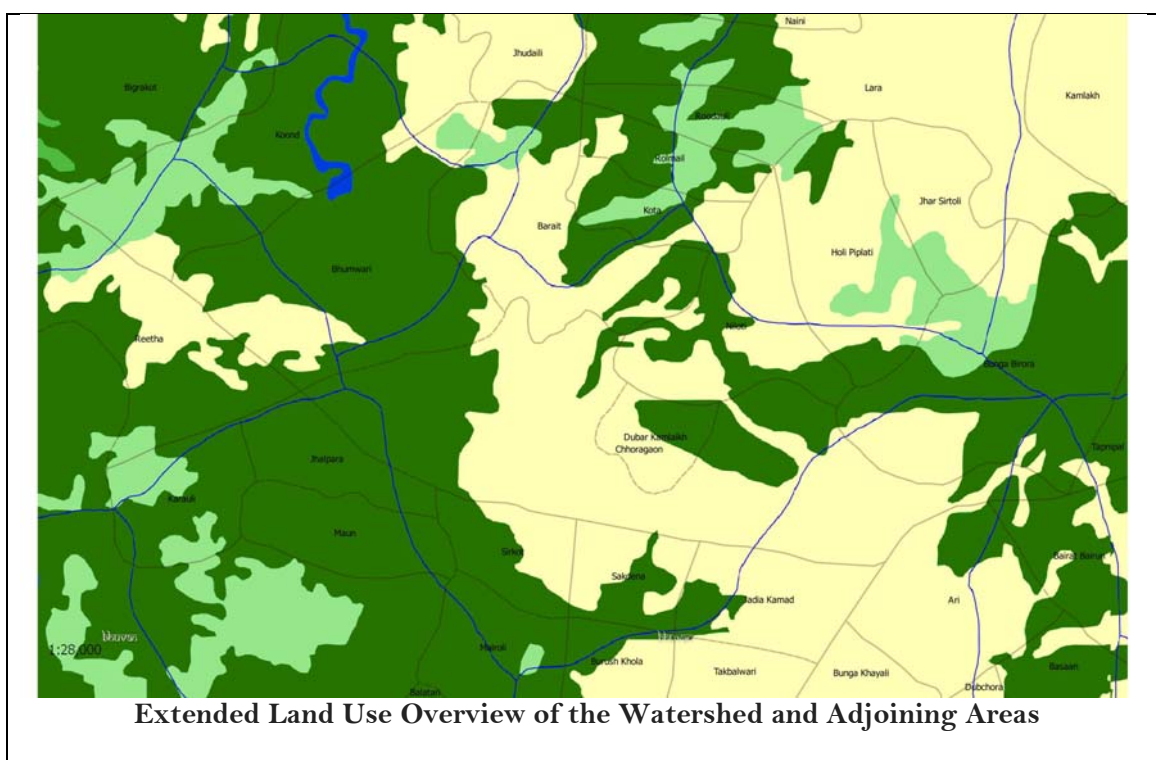
Badait (Badet) has now only 20 families in the village which cultivates around 10-15 nali (estimated) for agriculture whereas the total estimated agricultural land is around 12 hectares. Most of the people here are desirous of taking up horticulture activity. Land is fertile but lacks irrigation due to defunct canal. 40-80% land is on NS aspect. Mainly wheat and manduwa is sown among coarse cereals.

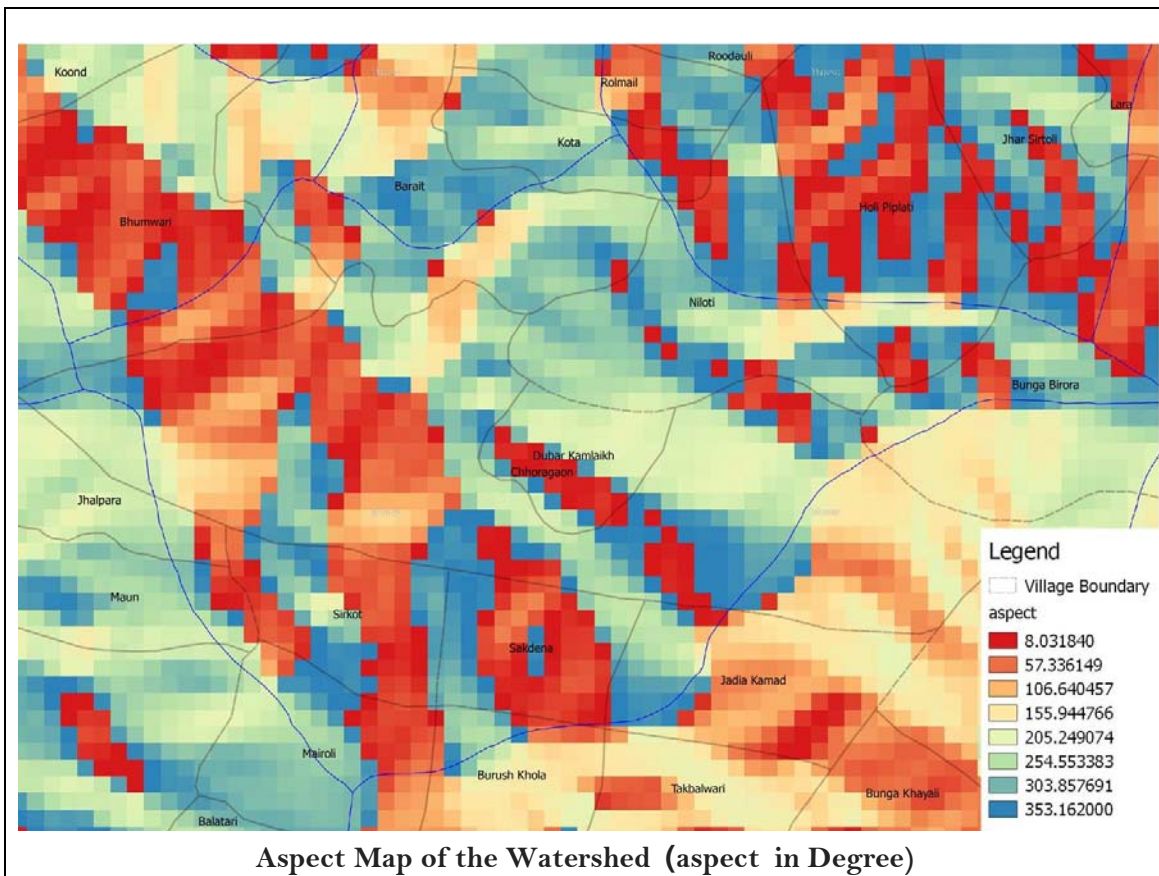
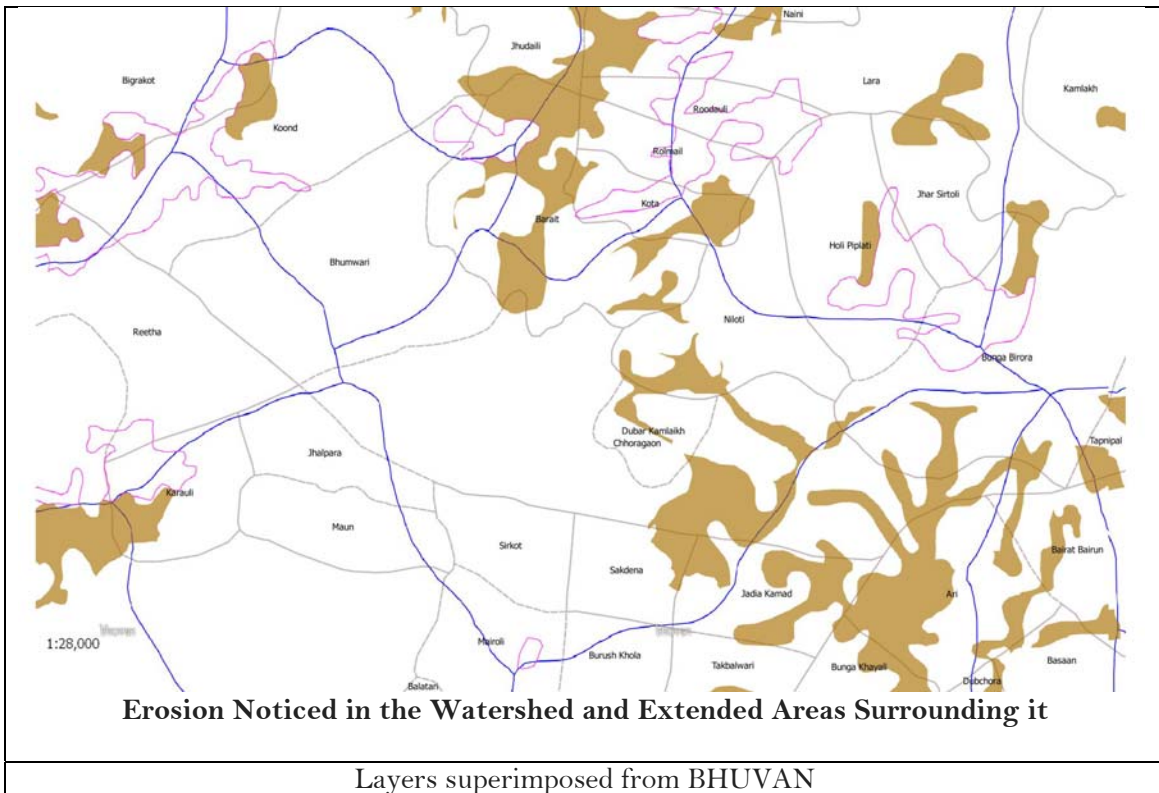
### **Reflections from Village Level Interactions**

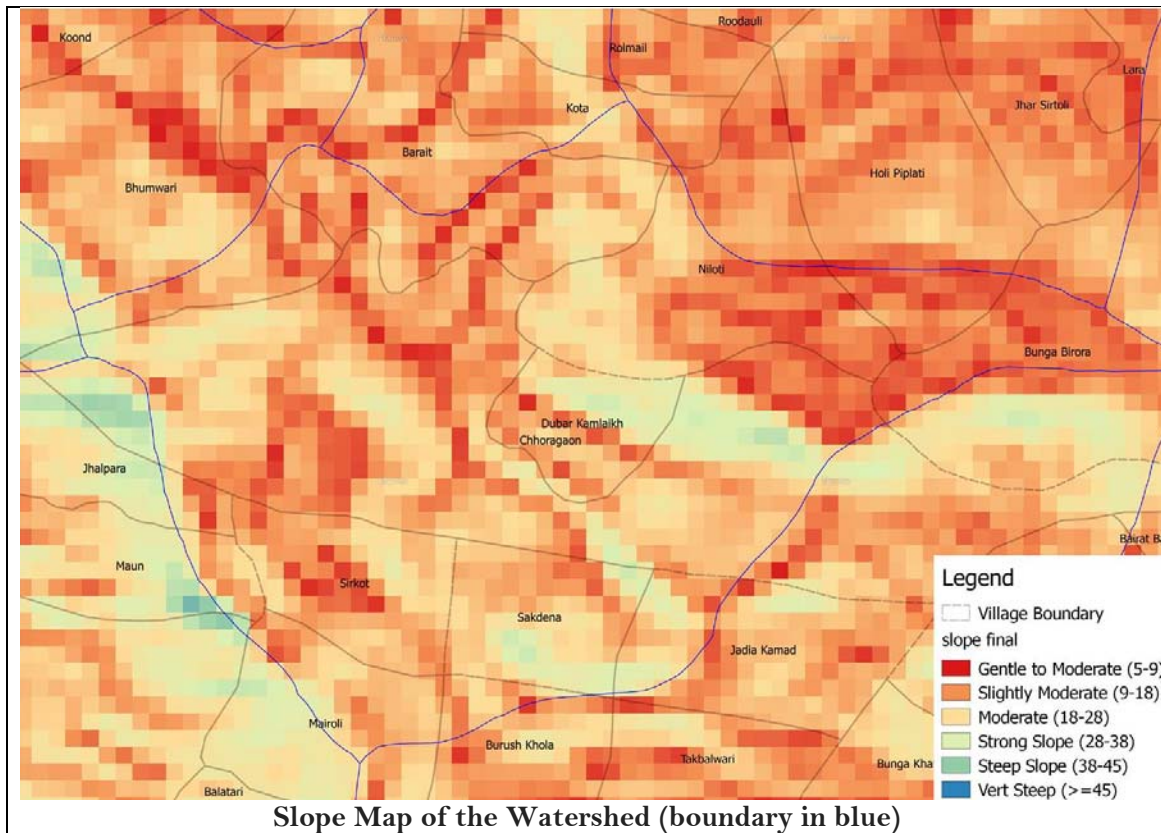
- Changing cropping pattern and crops in order to keep wild animals at bay
- Based on soil depth, compatible crops can be sown like fodder, plants, fruits etc.
- Construction of chal-khal in the catchment areas to ensure all round supply of water. This work can be taken up under MGNREGA
- Lack of extension service / knowledge to adopt varieties that are resistant and provide better yield.
- Departmental experts can be asked to provide technical and other inputs for enhancing the quality of agriculture in the area. An extension office or any day of a month can be fixed for regular interactions for schemes as well as resolution of problems faced by farmers
- Insufficient water sources for irrigation of fields is also one of the main deterrents and this problem is also escalated due to fragmented holdings
- that agriculture is left to a miniscule level of typical 4-5 nali (nali=200 sq. m.) per family,
- that a little capacity enhancement can lead to increase in production (horticulture), pruning, stacking, netting techniques are not known locally for propagation of horticulture crops
- some of the assets like 'Krishi Vipnan Kendra' (Samudayik vitran kendra) exist but its purpose is no more served
- the share of barren land is increasing and one has to strategise around it while planning i.e. how to bring back this into productive use.
- Some solutions have to be offered at the larger watershed level (say, whole Pati belt with 40 villages) with the help of forest department – for example, afforestation in the upper reaches as an effort to make wildlife depend on these upper forests. The provisions in the working plan can be matched or give space to these local issues.

Species like Bamour (बमौर) which resembles to litchi fruit and many others (Kuni like fox's tail along the farm bunds), if planted with adequate care, these may provide some relief from wild animal attacks over the medium term.

After this preliminary round of information generation, series of maps were generated which form part of the planning and ground level mapping of resources in the region. These resource maps provide a broad spatial look which can also be used on site to determine slope and aspect as well as water sources which become critical in identification of agricultural potential or enable scientific and climate sensitive agriculture. This was found relevant because many a times, adjoining villages in the same eco-region have had successes as well as failures (could also be due to seed quality), planting on the right aspect and slope may prevent many failures. These maps can be seen below;







## Conclusion

As described in the methodology, the sequential steps were taken to reach out at mapping, participative identification of activities and putting in a framework to follow in the future. In the concluding part, a meeting was called in July 2018 in Toli to share the findings and discuss together on participatory planning and how it can be taken forward. Group work was also proposed in the meeting and people also shared their concerns with the adjoining villages too. Alongwith this synthesis of problems and potentials were also put together. Following is the outcome in brief;

## Group Discussion

Three groups were formed among the participants from villages (people were free either to choose themes of agriculture, horticulture, water conservation or discuss as per groups choice)

1. How do they look at women's role in planning
2. It was also requested to people that they should share good examples practiced by them or known to them
3. People were also requested to think about short-medium and long term issues for which efforts will also be different.



The following emerged<sup>4</sup> from the group work among the villages.

| Village        | Problem Statement                                                                                                                                                                                                                                                                                                                                                        | Suggestions by Village                                                                                                      |
|----------------|--------------------------------------------------------------------------------------------------------------------------------------------------------------------------------------------------------------------------------------------------------------------------------------------------------------------------------------------------------------------------|-----------------------------------------------------------------------------------------------------------------------------|
| Tak<br>Balwari | Lack of water resource (two streams and one sub-surface channel and a water pipeline). Sub surface channel fills water in a tank called 'naula' which is a traditional water conservation technique but it is insufficient to meet the needs of all families in the village. Local streams are untapped as they are far off. Even the piped water supply is insufficient | Regarding water pipeline, there is a need for a renewed water scheme<br><br>A canal is needed to take water to the field    |
|                | Crops remain insecure due to no protection (safety wall around field) from animals, especially wild boar                                                                                                                                                                                                                                                                 | Wire fencing of fields                                                                                                      |
|                | Forests – Mostly consist of pine trees, some requirements of timber and fuelwood is met                                                                                                                                                                                                                                                                                  | People think there is no usefulness of this forest, Fire continues to destroy forests. The need is for broadleaved forests. |
|                | Women perform most of agriculture and animal husbandary                                                                                                                                                                                                                                                                                                                  | Need good stock of animals to take advantage of milk dairy. Earnings by women for the family, no exclusive right of women   |

| Village | Problem Statement                                                                                                                                                                                                                                   | Suggestions by Village                                                                                               |
|---------|-----------------------------------------------------------------------------------------------------------------------------------------------------------------------------------------------------------------------------------------------------|----------------------------------------------------------------------------------------------------------------------|
| Sakdena | Main issue is of water despite 7 naulas, only 3 are operational rest are dried up due to sub surface flow pattern disturbance.                                                                                                                      | There are several streams but water needs to be lifted as the village fields are located much higher than the source |
|         | Two water pipelines are operating (mostly LSGD line works supplying water for 1 hour in the village)                                                                                                                                                |                                                                                                                      |
|         | Animal Husbandary – only 1 milching cattle is being raised per family (most of the families practice). Except 3-4 months, rest of the months are fodder scarce months and is difficult to raise cattle                                              | Women are totally committed in dairy but better cattle variety is needed.                                            |
|         | Agriculture <ul style="list-style-type: none"> <li>- Problems raised by wild animals by destroying crops</li> <li>- Lack of irrigation</li> <li>- Lack of access to improved varieties</li> <li>- Problem of stray cattle (damage crops)</li> </ul> | Wire fencing for safety of crops                                                                                     |

<sup>4</sup> ANNEXURE – GROUP WORK

| Village | Problem Statement                                                                                                             | Suggestions by Village                                                                |
|---------|-------------------------------------------------------------------------------------------------------------------------------|---------------------------------------------------------------------------------------|
| Niloti  | Requirement of crop protection safety wall<br>Connectivity issues for taking produce to market (like flowers or farm produce) |                                                                                       |
|         | Improved Seeds                                                                                                                | Unable to procure citrus fruit plants (even not for walnut) as well as for vegetables |
|         | Drinking water problems<br>Irrigation is a deterrent in doing agriculture                                                     | Every hamlet/habitation may require a dedicated source                                |
|         | Fisheries                                                                                                                     | People must be given support on fish farming to raise their livelihood security       |
|         | Upgradation of existing high school in the village and improvement in facilities                                              |                                                                                       |
|         | Dairy farming                                                                                                                 | Women centric enterprise to be promoted                                               |
|         | Honey bee farming                                                                                                             | Potential to be explored                                                              |

#### 4-Axis Synthesis of Issues Emerging

##### 1. Livelihood (Strengthening Technical inputs)

| Problem                                          | Potential Existing                                                    | Potential to be Used                                                           |
|--------------------------------------------------|-----------------------------------------------------------------------|--------------------------------------------------------------------------------|
| <b><i>Horticulture underdevelopment</i></b>      |                                                                       |                                                                                |
| Extension service absent                         | Few farmers have been doing well, demonstratively.                    | Scientific planning (soil, slope, aspect, nutrient)                            |
| Insurance benefits not suitable to small farmers | Probably collective farming could be a potential to be able to apply. | Small farms can take benefit given the increasing number of climatic incidents |
| Improved varieties not known locally             | Only progressive farmers tested / planted                             | Schemes to be tailor made                                                      |
| Marketing of produce                             | Locally sold                                                          | Local enterprises for value addition and market linkages                       |

##### 2. Support Services (Finance-Technical-Institutional)

| Problem                                   | Potential Existing                                                                         | Potential to be Used                                                             |
|-------------------------------------------|--------------------------------------------------------------------------------------------|----------------------------------------------------------------------------------|
| <b><i>De-farming</i></b>                  |                                                                                            |                                                                                  |
| Migration                                 | Farmland                                                                                   | Collective or cooperative farming, else weeding and fertility issues arise       |
| Lack of Irrigation                        | Reintroduce Millets & groundnuts <sup>5</sup> (orientation towards natural products exist) | Enabling market linkage for produce for making place in packaged food market     |
| Organic Certification issues <sup>6</sup> | Biodegradable waste, cow dung being used                                                   | Niche marketing required                                                         |
| Fragmented farmland (marginal to small)   | Only few places where people provide farming help to each other                            | Activities in de-farmed lands or in clusters where multiple families can benefit |

<sup>5</sup> Pati belt in the Ladhiya valley is not more able to grow the traditional groundnut due to a consistent threat from wild boar, now it is coming to Lohaghat market from Almora and surroundings. The well drained sandy loam soil with a pH of about 6-7 is perfect for its sowing.

<sup>6</sup> Although most of the farming is organic, precautionary approach is required as per the methodology of certifying agency (earlier few farmers grew local anti-pest shrubs which was not acceptable to the certifying agency)



|                        |                    |                                                                                               |
|------------------------|--------------------|-----------------------------------------------------------------------------------------------|
| Attack by Wild Animals | -                  | Alternate Farming and crops, alternate planning to keep animals at bay (enriching the forest) |
|                        | Community forestry | Creating symbiotic relationship between forest and agriculture                                |

### ***3. Aqua Based Integrated Livelihoods (Contributory-Subsidised Model)***

| <b>Problem</b>               | <b>Potential Existing</b>                                                      | <b>Potential to be Used</b>                                                                        |
|------------------------------|--------------------------------------------------------------------------------|----------------------------------------------------------------------------------------------------|
| <b>Fisheries Development</b> |                                                                                |                                                                                                    |
| Access to Finance            | Pati declared as fishing belt. Has historical impressions and ongoing farming. | Interlinked integrated farming potential.<br>Resource organisation on fisheries development exist. |
| Seed Availability            | Good institutional repo with Directorate and State Fisheries Department        | Community collective missing or defunct (need revival)                                             |
| Fish ponds*                  | Defunct ponds existing                                                         | Require a master plan for the same                                                                 |
|                              |                                                                                | Subsidy scheme for the same to be utilised by farmer groups                                        |

\* as a result, it aids water retention and moisture around the fields and overflows can be used for gravity irrigation

### ***4. Livelihoods (Reintroducing Traditional and export oriented crops, Imparting Adaptative & Mitigative Approach)***

| <b>Problem</b>                    | <b>Potential Existing</b>                                 | <b>Potential to be Used</b>                                                                                   |
|-----------------------------------|-----------------------------------------------------------|---------------------------------------------------------------------------------------------------------------|
| <b>Alternate Cropping Pattern</b> |                                                           |                                                                                                               |
| No Scientific help to farmers     | Common pool of land which is lying unused can be taken up | Grower groups to be promoted with chain of activities leading to next level (like value addition or buy back) |
| Acceptance of new crop            | Demo plots to be done at                                  | Watershed department's                                                                                        |

|                                                   |                                                                         |                                                                                                       |
|---------------------------------------------------|-------------------------------------------------------------------------|-------------------------------------------------------------------------------------------------------|
|                                                   | different areas (valley, hills, different altitudes within a watershed) | technical knowledge and market                                                                        |
| Lack of scientific know how on improved varieties | Partial success e:g Kiwi fruit                                          | Cross exchange between existing fruit belts for imparting best practices<br>Niche marketing required. |

### Way Forward

- Based on the experience of local organisations working in the watershed/region, with interactive (small meetings with village people) sessions, own observations as well as issues atypical to the region, the following broad framework of proposed activities was drawn so as to facilitate the dialogue further and address the issues raised by the communities from time to time.
- There is an intrinsic link between activities suggested and the primary concerns raised but as an appropriate model for meeting the needs, a review of programmes in these villages is required to revisit the needs of people.
- The selected area in the Bhingrada and Devidhura forest range is neither under the Integrated Livelihood Improvement Project nor in the forest department's micro plan preparation for the Van Panchayats. So the opportunities exist to strengthen these.
- As most of the agricultural, resource harvesting, animal husbandary activities are performed by the women, it is pertinent to design gender sensitive planning but also take into consideration to not burden the existing activities.
- This is a framework and will have to be modified upon time due to changing circumstances, priorities and need assessments at the local level.
- The portfolio of suggested activities have been drawn after group discussions, field exercises but their actual implementation will depend on the financial and programmatic convergence wherever possible. For example, the existing fisheries support may not be viable at a certain size of pond and may get a person disinterested due to no effective returns. Thus the model has to look for a different approach where a larger size or collective fisheries is promoted.
- Desires must be captured and verified whether these can be realised in scientific manner or on account of other factors also.

### Range of Issues for Micro Planning (Broad Planning Outlook)

| S.No. | Resources                                                                      | Existing                                                                               | Desired                                                                                | Proposed                                                                                                                                                                                                     |
|-------|--------------------------------------------------------------------------------|----------------------------------------------------------------------------------------|----------------------------------------------------------------------------------------|--------------------------------------------------------------------------------------------------------------------------------------------------------------------------------------------------------------|
| R-1   | Land Suitable for Agriculture but kept fallow + barren land (other than rocky) | Yes (except 4-5 nali/family, rest is not used and eventually being covered with weeds) | Bring back to use in the integrated farming frame                                      | Fodder Trees + Grass Varieties (Napier, Dodni, Gucchi, Kikwi, Mulberry), Bhimal                                                                                                                              |
| R-2   | Nursery Development                                                            | No                                                                                     | Individual level for increasing access                                                 | Fodder Types, Horticulture                                                                                                                                                                                   |
| R-3   | Horticulture based clusters                                                    | No (only limited to few progressive farmers)                                           | Nursery, Plants, Market                                                                | Mostly citrus (kiwi, malta, plum, lemon), Improved apple varieties                                                                                                                                           |
| R-4   | Fisheries <sup>7</sup>                                                         | Yes (limited)                                                                          | Subsidy cum contributory model integrated with water conservation and irrigation needs | Support for few farmers from the District Plan has been assured by the CDO<br><i>A model comprising subsidy, technical knowledge transfer and farmer's contribution can be seen at the end of this table</i> |

<sup>7</sup> **Fisheries in Pati Block** - Fisheries over the last several years has taken shape in the form of small holder hill fisheries. The fisheries ponds are spread over 10 villages over an area of 4200 sq. m (collectively more than an acre). The maximum area is in Joladi with 9 ponds of 1000 sq. m. and Toli from where it flourished – here 4 ponds of total area of 750 sq. m exist. Other villages are Raulmel, Kota, Pati, Jairol, Kinwari, Pamola, Bhumwari. These ponds have become old and require maintenance. Maintenance of ponds is not in the norms of fisheries department and thus small farmers are unable to repair on their own. A request for the same has been forwarded to the district authorities to sanction amount for the repair of these ponds, it is still under consideration. But it is expected that the sanction may be approved for a few farmers and not all of them.

| S.No. | Resources                     | Existing                   | Desired                                                    | Proposed                                                                                                                                                                                                                                                              |
|-------|-------------------------------|----------------------------|------------------------------------------------------------|-----------------------------------------------------------------------------------------------------------------------------------------------------------------------------------------------------------------------------------------------------------------------|
| R-5   | Animal Husbandary and Dairy   | Yes (quite a few villages) | Better yielding varieties of cattle and fodder requirement | Improved varieties is an investment programme, Government support needs to be followed up with.<br>The current alignment of this resource is thus currently limited to improved fodder development which is available round the year (to be utilised on barrent land) |
| R-6   | Vegetable and Spices          | Yes (not spices)           | Improved seeds, nursery                                    | Nursery development for improved varieties. Off season vegetables with buy-back arrangements to be explored                                                                                                                                                           |
| R-7   | Medicinal and Aromatic Plants | No                         | Fresh Activity                                             | Potential for this (nursery) can be explored with R-9 + R-10                                                                                                                                                                                                          |
| R-8   | Water Conservation            |                            |                                                            | Niloti requires water lifting to the village, Badet has a defunct Gul which can be linked to MGNREGA works as water is a priority                                                                                                                                     |

| S.No. | Resources                                    | Existing                                                | Desired                                                                                                                                                                                                | Proposed                                                                                                                                                                                                                                                            |
|-------|----------------------------------------------|---------------------------------------------------------|--------------------------------------------------------------------------------------------------------------------------------------------------------------------------------------------------------|---------------------------------------------------------------------------------------------------------------------------------------------------------------------------------------------------------------------------------------------------------------------|
| R-9   | Institutional Strengthening (Van Panchayats) | No (currently there is no plan for their strengthening) | Management, value enhancement income generation                                                                                                                                                        | Initial support may require exchange visits to local Areas like Ladhauri                                                                                                                                                                                            |
| R-10  | Provisioning of Extension Services           | No                                                      | Relevance for providing technical know-how to farmers, build capacity in medium term and withdrawal strategy should sync with developed capacity in each area<br><b>Push for Organic Certification</b> | For sustenance in an area, especially land based activities, such an extension will prove beneficial where the area hasn't taken any stride towards integrated farming. As technical know how exist in fisheries, agri-horti support service will prove beneficial. |

Sustainability and Planning Chart

| Horticulture | Fruit               |  | Suitability Analysis     |                                             |                          |                      |                            |                                  | Management Caring |          |                    |                       | Produce       |                 |                |
|--------------|---------------------|--|--------------------------|---------------------------------------------|--------------------------|----------------------|----------------------------|----------------------------------|-------------------|----------|--------------------|-----------------------|---------------|-----------------|----------------|
|              | CLUSTER<br>WHERE IT |  | Best for<br>which height | Planting<br>Time & material<br>availability | Local Disease<br>noticed | Improved<br>variety  | Water<br>req.              | Best<br>Aspect                   | Pruning           | Stacking | Pest<br>Control    | Climate<br>robustness | Value<br>Add? | Local<br>Market | Reg.<br>Market |
|              |                     |  | In meters                | Month & place                               | Name & how<br>to tackle  | Name,<br>Suitability | Minimal<br>Average<br>More | South<br>East<br>North-<br>South | Time              | Time     | Organic<br>methods | vulnerability         | ???           |                 |                |
| Horticulture |                     |  |                          |                                             |                          |                      |                            |                                  |                   |          |                    |                       |               |                 |                |
|              |                     |  |                          |                                             |                          |                      |                            |                                  |                   |          |                    |                       |               |                 |                |
|              |                     |  |                          |                                             |                          |                      |                            |                                  |                   |          |                    |                       |               |                 |                |
|              |                     |  |                          |                                             |                          |                      |                            |                                  |                   |          |                    |                       |               |                 |                |
|              |                     |  |                          |                                             |                          |                      |                            |                                  |                   |          |                    |                       |               |                 |                |
|              |                     |  |                          |                                             |                          |                      |                            |                                  |                   |          |                    |                       |               |                 |                |
| Others       | Vegeta<br>bles      |  |                          |                                             |                          |                      |                            |                                  |                   |          |                    |                       |               |                 |                |
|              |                     |  |                          |                                             |                          |                      |                            |                                  |                   |          |                    |                       |               |                 |                |
|              |                     |  |                          |                                             |                          |                      |                            |                                  |                   |          |                    |                       |               |                 |                |
|              |                     |  |                          |                                             |                          |                      |                            |                                  |                   |          |                    |                       |               |                 |                |
|              | Cereal              |  |                          |                                             |                          |                      |                            |                                  |                   |          |                    |                       |               |                 |                |
|              |                     |  |                          |                                             |                          |                      |                            |                                  |                   |          |                    |                       |               |                 |                |
|              |                     |  |                          |                                             |                          |                      |                            |                                  |                   |          |                    |                       |               |                 |                |

## Prevalant Fisheries Model

In the prevalent procedure and method of subsidy, only a progressive farmer or that farmer with certain financial liquidity can only take up fisheries activity. The current arrangement doesn't provide maintenance support which more or less becomes need based over a period of 5-6 years. In the table below, it is only in the fourth year that some return starts coming, that too when very liberal fish production and its sale has been assumed. Feed is essential for fish growth so market based feed supplemented with home based methods is required and some cost has been included. Even if the labour cost is removed (Rs. 5000) assuming it to be invested as labour by the applicant, difference becomes a bit narrow. Because subsidy component for SC's is more, the return period is early. There is a need for collective farming to do it at an economically feasible scale (size of pond, number of farmers) so that some sustainability is brought into the activity for which technical expertise is available in the region. Its success rate will increase once a little renewed approach is taken up.

### SUBSIDY (FOR GENERAL CATEGORY)

| <i>Pond Size</i>                             | <i>100 sq.m</i>  | Based on field experience & farmer interaction |               |              |              |              |
|----------------------------------------------|------------------|------------------------------------------------|---------------|--------------|--------------|--------------|
| <i>Government Subsidy</i>                    | <i>Rs. 25000</i> | <b>Yr1</b>                                     | <b>Yr2</b>    | <b>Yr3</b>   | <b>Yr4</b>   | <b>Yr5</b>   |
| Cost (Farmer Contribution)                   | Rs (One Time)    | 25000                                          | 0             | 0            | 0            | 0            |
| Seed Cost                                    | Rs/year          | 500                                            | 500           | 500          | 500          | 500          |
| Feed Cost*                                   | Rs/year          | 1750                                           | 1750          | 1750         | 1800         | 1800         |
| Other Costs**                                | Rs/year          | 5000                                           | 1000          | 1000         | 1000         | 1000         |
| Technical Input                              | Rs (One Time)    | 5000                                           | 0             | 0            | 0            | 0            |
| Labour (Rs. Worth in Kind)                   | Rs (One Time)    | 5000                                           | 0             | 0            | 0            | 0            |
| Total Expenditure                            |                  | <b>42250</b>                                   | 3250          | 3250         | 3300         | 3300         |
| Expected Income                              |                  | 15000                                          | 15000         | 15000        | 15000        | 15000        |
| Net After Expenditure minus Income           |                  | <b>-27250</b>                                  | <b>11750</b>  | 11750        | 11700        | 11700        |
| <b>TOTAL</b>                                 |                  | <b>-27250</b>                                  | <b>-15500</b> | <b>-3750</b> | <b>7950</b>  | <b>11700</b> |
| <i>If labour's monetary value is removed</i> |                  | <b>-22250</b>                                  | <b>-10500</b> | <b>-1250</b> | <b>10450</b> | <b>11700</b> |

\* actual cost = Rs. 3500

\*\* include HAPA net, medicines and the home based expenditure on feed

### SUBSIDY (SC CATEGORY)

| <i>Pond Size</i>                             | <i>100 sq.m</i>  | Based on field experience & farmer interaction |              |              |              |              |
|----------------------------------------------|------------------|------------------------------------------------|--------------|--------------|--------------|--------------|
| <i>Government Subsidy</i>                    | <i>Rs. 42000</i> | <b>Yr1</b>                                     | <b>Yr2</b>   | <b>Yr3</b>   | <b>Yr4</b>   | <b>Yr5</b>   |
| Cost (Farmer Contribution)                   | Rs (One Time)    | 8000                                           | 0            | 0            | 0            | 0            |
| Seed Cost                                    | Rs/year          | 500                                            | 500          | 500          | 500          | 500          |
| Feed Cost*                                   | Rs/year          | 1750                                           | 1750         | 1750         | 1800         | 1800         |
| Other Costs**                                | Rs/year          | 5000                                           | 1000         | 1000         | 1000         | 1000         |
| Technical Input                              | Rs (One Time)    | 2500                                           | 0            | 0            | 0            | 0            |
| Labour (Rs. Worth in Kind)                   | Rs (One Time)    | 5000                                           | 0            | 0            | 0            | 0            |
| Total Expenditure                            |                  | <b>22750</b>                                   | 3250         | 3250         | 3300         | 3300         |
| Expected Income                              |                  | 15000                                          | 15000        | 15000        | 15000        | 15000        |
| Net After Expenditure minus Income           |                  | <b>-7750</b>                                   | <b>11750</b> | 11750        | 11700        | 11700        |
|                                              |                  | <b>-7750</b>                                   | <b>4000</b>  | <b>11750</b> | <b>11700</b> | <b>11700</b> |
| <i>If labour's monetary value is removed</i> |                  | <b>-2750</b>                                   | <b>9000</b>  | <b>11750</b> | <b>11700</b> | <b>11700</b> |



## ANNEXURE – MGNREGA ACTIVITIES

| State : UTTARAKHAND District : CHAMPAWAT Block : PATI<br>Panchayat : NILOTI | MGNREGA WORKS OVER THE YEARS |              |              |              |              | As on 22-08-2018 |
|-----------------------------------------------------------------------------|------------------------------|--------------|--------------|--------------|--------------|------------------|
| I Job Card                                                                  |                              |              |              |              |              |                  |
| Total No. of JobCards issued                                                |                              |              |              |              |              | 119              |
| Total No. of Workers                                                        |                              |              |              |              |              | 220              |
| Total No. of Active Job Cards                                               |                              |              |              |              |              | 109              |
| Total No. of Active Workers                                                 |                              |              |              |              |              | 161              |
| (i)SC worker against active workers[%]                                      |                              |              |              |              |              | 0                |
| (ii)ST worker against active workers[%]                                     |                              |              |              |              |              | 0                |
| II Progress                                                                 | FY 2018-2019                 | FY 2017-2018 | FY 2016-2017 | FY 2015-2016 | FY 2014-2015 |                  |
| Approved Labour Budget                                                      | 0                            | 0            | 0            | 0            | 0            |                  |
| Persondays Generated so far                                                 | 1,664                        | 5,082        | 4,158        | 2,399        | 744          |                  |
| % of Total LB                                                               | 0                            | 0            | 0            | 0            | 0            |                  |
| % as per Proportionate LB                                                   | 0                            |              |              |              |              |                  |
| SC persondays % as of total persondays                                      | 0                            | 0            | 0            | 0            | 0            |                  |
| ST persondays % as of total persondays                                      | 0                            | 0            | 0            | 0            | 0            |                  |
| Women Persondays out of Total (%)                                           | 61.24                        | 48.05        | 49.13        | 43.31        | 32.8         |                  |
| Average days of employment provided per HH                                  | 24.12                        | 57.1         | 43.77        | 38.69        | 24           |                  |
| Average Wage rate per day per person(Rs.)                                   | 175                          | 175          | 174          | 161          | 156          |                  |
| Total HHs completed 100 Days of Wage Employment                             | 0                            | 11           | 3            | 0            | 0            |                  |
| Total Households Worked                                                     | 69                           | 89           | 95           | 62           | 31           |                  |
| Total Individuals Worked                                                    | 95                           | 134          | 126          | 68           | 31           |                  |
| Differently abled persons worked                                            | 0                            | 0            | 0            | 0            | 0            |                  |
| III Works                                                                   |                              |              |              |              |              |                  |
| Number of GPs with NIL exp                                                  | 0                            | 0            | 0            | 0            | 0            |                  |
| Total No. of Works Takenup (New+Spill Over)                                 | 30                           | 49           | 24           | 13           | 7            |                  |
| Number of Ongoing Works                                                     | 20                           | 29           | 17           | 11           | 2            |                  |
| Number of Completed Works                                                   | 10                           | 20           | 7            | 2            | 5            |                  |
| % of NRM Expenditure(Public + Individual)                                   | 74.53                        | 41.44        | 48           | 47.45        | 57.33        |                  |
| % of Category B Works                                                       | 56.67                        | 48.98        | 33.33        | 15.38        | 0            |                  |
| IV Financial Progress                                                       |                              |              |              |              |              |                  |
| Total Exp(Rs. in Lakhs.)                                                    | 4.47                         | 12.82        | 9.67         | 2.5          | 5.71         |                  |
| Wages(Rs. In Lakhs)                                                         | 2.95                         | 9.11         | 9.07         | 1.76         | 3.82         |                  |
| Material and skilled Wages(Rs. In Lakhs)                                    | 1.52                         | 3.71         | 0.6          | 0.74         | 1.89         |                  |
| Material(%)                                                                 | 33.97                        | 28.94        | 6.22         | 29.5         | 33.03        |                  |
| Total Adm Expenditure (Rs. in Lakhs.)                                       | 0                            | 0            | 0            | 0            | 0            |                  |
| Admin Exp(%)                                                                | 0                            | 0            | 0            | 0            | 0            |                  |
| Average Cost Per Day Per Person(In Rs.)                                     | 236.22                       | 198.59       | 181.56       | 191.76       | 186.72       |                  |
| % of Total Expenditure through EFMS                                         | 100                          | 100          | 100          | 100          | 0            |                  |
| % payments generated within 15 days                                         | 100                          | 97.36        | 37.18        | 10.5         | 100          |                  |

[http://mnregaweb4.nic.in/netnrega/all\\_lvl\\_details\\_dashboard\\_new.aspx](http://mnregaweb4.nic.in/netnrega/all_lvl_details_dashboard_new.aspx)

|                                                                              |              |              |              |              |                  |
|------------------------------------------------------------------------------|--------------|--------------|--------------|--------------|------------------|
| State : UTTARAKHAND District : CHAMPAWAT Block : PATI<br>Panchayat : SARDENA |              |              |              |              | As on 22-08-2018 |
| I Job Card                                                                   |              |              |              |              |                  |
| Total No. of JobCards issued                                                 | 110          |              |              |              |                  |
| Total No. of Workers                                                         | 167          |              |              |              |                  |
| Total No. of Active Job Cards                                                | 79           |              |              |              |                  |
| Total No. of Active Workers                                                  | 91           |              |              |              |                  |
| (i)SC worker against active workers[%]                                       | 10.99        |              |              |              |                  |
| (ii)ST worker against active workers[%]                                      | 0            |              |              |              |                  |
| II Progress                                                                  | FY 2018-2019 | FY 2017-2018 | FY 2016-2017 | FY 2015-2016 | FY 2014-2015     |
| Approved Labour Budget                                                       | 0            | 0            | 0            | 0            | 0                |
| Persondays Generated so far                                                  | 900          | 3,442        | 1,390        | 3,439        | 1,418            |
| % of Total LB                                                                | 0            | 0            | 0            | 0            | 0                |
| % as per Proportionate LB                                                    | 0            |              |              |              |                  |
| SC persondays % as of total persondays                                       | 2.67         | 9.73         | 8.63         | 7.33         | 12.27            |
| ST persondays % as of total persondays                                       | 0            | 0            | 0            | 0            | 0                |
| Women Persondays out of Total (%)                                            | 60.89        | 53.75        | 48.27        | 48.1         | 31.95            |
| Average days of employment provided per Household                            | 18.75        | 57.37        | 23.56        | 39.53        | 32.98            |
| Average Wage rate per day per person(Rs.)                                    | 175          | 175          | 174          | 161          | 156              |
| Total No of HHs completed 100 Days of Wage Employment                        | 0            | 5            | 0            | 1            | 0                |
| Total Households Worked                                                      | 48           | 60           | 59           | 87           | 43               |
| Total Individuals Worked                                                     | 57           | 73           | 63           | 97           | 45               |
| Differently abled persons worked                                             | 0            | 0            | 0            | 0            | 0                |
| III Works                                                                    |              |              |              |              |                  |
| Number of GPs with NIL exp                                                   | 0            | 0            | 0            | 0            | 0                |
| Total No. of Works Takenup (New+Spill Over)                                  | 11           | 26           | 27           | 20           | 8                |
| Number of Ongoing Works                                                      | 4            | 8            | 16           | 15           | 6                |
| Number of Completed Works                                                    | 7            | 18           | 11           | 5            | 2                |
| % of NRM Expenditure(Public + Individual)                                    | 56.26        | 26.63        | 40.66        | 40.85        | 44.72            |
| % of Category B Works                                                        | 45.45        | 50           | 18.52        | 0            | 0                |
| IV Financial Progress                                                        |              |              |              |              |                  |
| Total Exp(Rs. in Lakhs.)                                                     | 1.91         | 6.92         | 7.91         | 4.98         | 5.74             |
| Wages(Rs. In Lakhs)                                                          | 1.31         | 5.26         | 6.39         | 3.67         | 4.03             |
| Material and skilled Wages(Rs. In Lakhs)                                     | 0.6          | 1.66         | 1.52         | 1.31         | 1.71             |
| Material(%)                                                                  | 31.37        | 24.03        | 19.21        | 26.33        | 29.82            |
| Total Adm Expenditure (Rs. in Lakhs.)                                        | 0            | 0            | 0            | 0            | 0                |
| Admin Exp(%)                                                                 | 0            | 0            | 0            | 0            | 0                |
| Average Cost Per Day Per Person(In Rs.)                                      | 257.82       | 212          | 259.31       | 197.67       | 188.12           |
| % of Total Expenditure through EFMS                                          | 100          | 100          | 100          | 100          | 0                |
| % payments generated within 15 days                                          | 100          | 92.56        | 54.47        | 17.74        | 93.62            |

|                                                                                               |                     |                     |                     |                     |                         |
|-----------------------------------------------------------------------------------------------|---------------------|---------------------|---------------------|---------------------|-------------------------|
| <b>State : UTTARAKHAND District : CHAMPAWAT Block : PATI</b><br><b>Panchayat : Takbalwadi</b> |                     |                     |                     |                     | <b>As on 22-08-2018</b> |
| <b>I Job Card</b>                                                                             |                     |                     |                     |                     |                         |
| Total No. of JobCards issued                                                                  | 93                  |                     |                     |                     |                         |
| Total No. of Workers                                                                          | 149                 |                     |                     |                     |                         |
| Total No. of Active Job Cards                                                                 | 80                  |                     |                     |                     |                         |
| Total No. of Active Workers                                                                   | 113                 |                     |                     |                     |                         |
| (i)SC worker against active workers[%]                                                        | 5.31                |                     |                     |                     |                         |
| (ii)ST worker against active workers[%]                                                       | 0                   |                     |                     |                     |                         |
| <b>II Progress</b>                                                                            | <b>FY 2018-2019</b> | <b>FY 2017-2018</b> | <b>FY 2016-2017</b> | <b>FY 2015-2016</b> | <b>FY 2014-2015</b>     |
| Approved Labour Budget                                                                        | 0                   | 0                   | 0                   | 0                   | 0                       |
| Persondays Generated so far                                                                   | 794                 | 3,969               | 2,242               | 0                   | 0                       |
| % of Total LB                                                                                 | 0                   | 0                   | 0                   | 0                   | 0                       |
| % as per Proportionate LB                                                                     | 0                   |                     |                     |                     |                         |
| SC persondays % as of total persondays                                                        | 3.02                | 1.84                | 3.17                | 0                   | 0                       |
| ST persondays % as of total persondays                                                        | 0                   | 0                   | 0                   | 0                   | 0                       |
| Women Persondays out of Total (%)                                                             | 57.05               | 52.94               | 50.89               | 0                   | 0                       |
| Average days of employment provided per Household                                             | 19.37               | 52.22               | 40.76               | 0                   | 0                       |
| Average Wage rate per day per person(Rs.)                                                     | 175                 | 175                 | 174                 | 0                   | 0                       |
| Total No of HHs completed 100 Days of Wage Employment                                         | 0                   | 14                  | 3                   | 0                   | 0                       |
| Total Households Worked                                                                       | 41                  | 76                  | 55                  | 0                   | 0                       |
| Total Individuals Worked                                                                      | 58                  | 105                 | 64                  | 0                   | 0                       |
| Differently abled persons worked                                                              | 0                   | 0                   | 0                   | 0                   | 0                       |
| <b>III Works</b>                                                                              |                     |                     |                     |                     |                         |
| Number of GPs with NIL exp                                                                    | 0                   | 0                   | 0                   | 1                   | 1                       |
| Total No. of Works Takenup (New+Spill Over)                                                   | 22                  | 28                  | 15                  | 1                   | 0                       |
| Number of Ongoing Works                                                                       | 15                  | 20                  | 15                  | 1                   | 0                       |
| Number of Completed Works                                                                     | 7                   | 8                   | 0                   | 0                   | 0                       |
| % of NRM Expenditure(Public + Individual)                                                     | 91.55               | 63.92               | 50.27               | 0                   | 0                       |
| % of Category B Works                                                                         | 4.55                | 17.86               | 33.33               | 0                   | 0                       |
| <b>IV Financial Progress</b>                                                                  |                     |                     |                     |                     |                         |
| Total Exp(Rs. in Lakhs.)                                                                      | 3.09                | 9.05                | 1.19                | 0                   | 0                       |
| Wages(Rs. In Lakhs)                                                                           | 1.75                | 8.06                | 1.19                | 0                   | 0                       |
| Material and skilled Wages(Rs. In Lakhs)                                                      | 1.34                | 0.99                | 0                   | 0                   | 0                       |
| Material(%)                                                                                   | 43.28               | 10.96               | 0                   | 0                   | 0                       |
| Total Adm Expenditure (Rs. in Lakhs.)                                                         | 0                   | 0                   | 0                   | 0                   | 0                       |
| Admin Exp(%)                                                                                  | 0                   | 0                   | 0                   | 0                   | 0                       |
| Average Cost Per Day Per Person(In Rs.)                                                       | 242.85              | 210.84              | 174                 | 0                   | 0                       |
| % of Total Expenditure through EFMS                                                           | 100                 | 100                 | 100                 | 0                   | 0                       |
| % payments generated within 15 days                                                           | 100                 | 95.94               | 34.52               | 0                   | 0                       |

|                                                                              |  |              |              |              |              |                  |
|------------------------------------------------------------------------------|--|--------------|--------------|--------------|--------------|------------------|
| State : UTTARAKHAND District : CHAMPAWAT Block : PATI<br>Panchayat : RAULMEL |  |              |              |              |              | As on 22-08-2018 |
| I Job Card                                                                   |  |              |              |              |              |                  |
| Total No. of JobCards issued                                                 |  |              |              |              |              | 162              |
| Total No. of Workers                                                         |  |              |              |              |              | 305              |
| Total No. of Active Job Cards                                                |  |              |              |              |              | 113              |
| Total No. of Active Workers                                                  |  |              |              |              |              | 170              |
| (i)SC worker against active workers[%]                                       |  |              |              |              |              | 3.53             |
| (ii)ST worker against active workers[%]                                      |  |              |              |              |              | 0                |
| II Progress                                                                  |  | FY 2018-2019 | FY 2017-2018 | FY 2016-2017 | FY 2015-2016 | FY 2014-2015     |
| Approved Labour Budget                                                       |  | 0            | 0            | 0            | 0            | 0                |
| Persondays Generated so far                                                  |  | 642          | 4,108        | 3,160        | 4,245        | 1,204            |
| % of Total LB                                                                |  | 0            | 0            | 0            | 0            | 0                |
| % as per Proportionate LB                                                    |  | 0            |              |              |              |                  |
| SC persondays % as of total persondays                                       |  | 9.03         | 2.12         | 2.15         | 5.56         | 7.23             |
| ST persondays % as of total persondays                                       |  | 0            | 0            | 0            | 0            | 0                |
| Women Persondays out of Total (%)                                            |  | 47.04        | 50.22        | 45.57        | 41.27        | 25.58            |
| Average days of employment provided per Household                            |  | 20.71        | 43.24        | 34.35        | 49.36        | 34.4             |
| Average Wage rate per day per person(Rs.)                                    |  | 175          | 175          | 174          | 161          | 156              |
| Total No of HHs completed 100 Days of Wage Employment                        |  | 0            | 3            | 1            | 4            | 1                |
| Total Households Worked                                                      |  | 31           | 95           | 92           | 86           | 35               |
| Total Individuals Worked                                                     |  | 36           | 138          | 126          | 123          | 37               |
| Differently abled persons worked                                             |  | 0            | 0            | 0            | 1            | 0                |
| III Works                                                                    |  |              |              |              |              |                  |
| Number of GPs with NIL exp                                                   |  | 0            | 0            | 0            | 0            | 0                |
| Total No. of Works Takenup (New+Spill Over)                                  |  | 29           | 45           | 31           | 17           | 5                |
| Number of Ongoing Works                                                      |  | 16           | 27           | 23           | 14           | 4                |
| Number of Completed Works                                                    |  | 13           | 18           | 8            | 3            | 1                |
| % of NRM Expenditure(Public + Individual)                                    |  | 82.72        | 40.73        | 21.3         | 5.3          | 69.84            |
| % of Category B Works                                                        |  | 44.83        | 42.22        | 35.48        | 0            | 0                |
| IV Financial Progress                                                        |  |              |              |              |              |                  |
| Total Exp(Rs. in Lakhs.)                                                     |  | 1.67         | 9.49         | 9.17         | 6.08         | 2.75             |
| Wages(Rs. In Lakhs)                                                          |  | 1.11         | 7.09         | 8.33         | 3.94         | 2.01             |
| Material and skilled Wages(Rs. In Lakhs)                                     |  | 0.56         | 2.4          | 0.84         | 2.14         | 0.73             |
| Material(%)                                                                  |  | 33.33        | 25.26        | 9.15         | 35.17        | 26.74            |
| Total Adm Expenditure (Rs. in Lakhs.)                                        |  | 0            | 0            | 0            | 0            | 0                |
| Admin Exp(%)                                                                 |  | 0            | 0            | 0            | 0            | 0                |
| Average Cost Per Day Per Person(In Rs.)                                      |  | 208.35       | 230.49       | 197.16       | 211.39       | 176.95           |
| % of Total Expenditure through EFMS                                          |  | 100          | 100          | 100          | 100          | 0                |
| % payments generated within 15 days                                          |  | 100          | 92.33        | 40.35        | 7.18         | 88.82            |

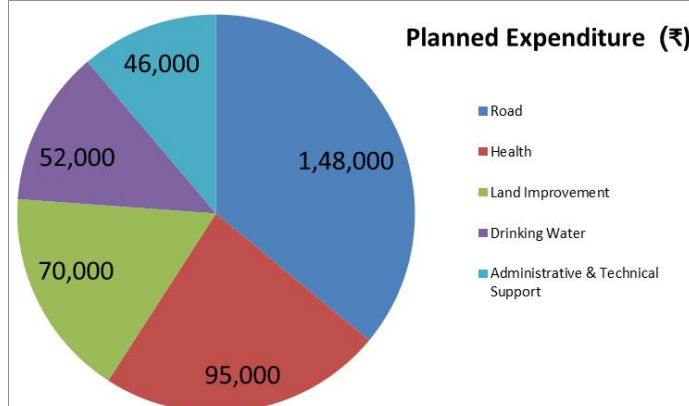
Circular - nrega.nic.in/Netnrega/WriteReaddata/Circulars/AMC\_2018-19\_nk\_v3\_21.03.18.pdf

# ANNEXURE – VILLAGE SUMMARIES, EXISTING SCHEMES & FINANCES

## NILOTI

| Total Action Plan Report : NILAUTY Village Panchayat : 2017-2018 |    |         |       |        |    |          |          |          |                               |    |         |       |        |    |          |          |          |                          |
|------------------------------------------------------------------|----|---------|-------|--------|----|----------|----------|----------|-------------------------------|----|---------|-------|--------|----|----------|----------|----------|--------------------------|
| SECTION 1 : Plan Summary                                         |    |         |       |        |    |          |          |          |                               |    |         |       |        |    |          |          |          |                          |
| Total Amount Allotted (In Rs.)                                   |    |         |       |        |    |          |          |          | Total Planned Outlay (In Rs.) |    |         |       |        |    |          |          |          |                          |
| Scheme                                                           |    |         |       |        |    |          |          | Own Fund | Scheme                        |    |         |       |        |    |          |          | Own Fund | Beneficiary Contribution |
| Tied                                                             |    |         |       | Untied |    |          |          |          | Tied                          |    |         |       | Untied |    |          |          |          |                          |
| SC                                                               | ST | General | Total | SC     | ST | General  | Total    |          | SC                            | ST | General | Total | SC     | ST | General  | Total    |          |                          |
| 0                                                                | 0  | 0       | 0     | 0      | 0  | 4,11,000 | 4,11,000 | 0        | 0                             | 0  | 0       | 0     | 0      | 0  | 4,11,000 | 4,11,000 | 0        |                          |

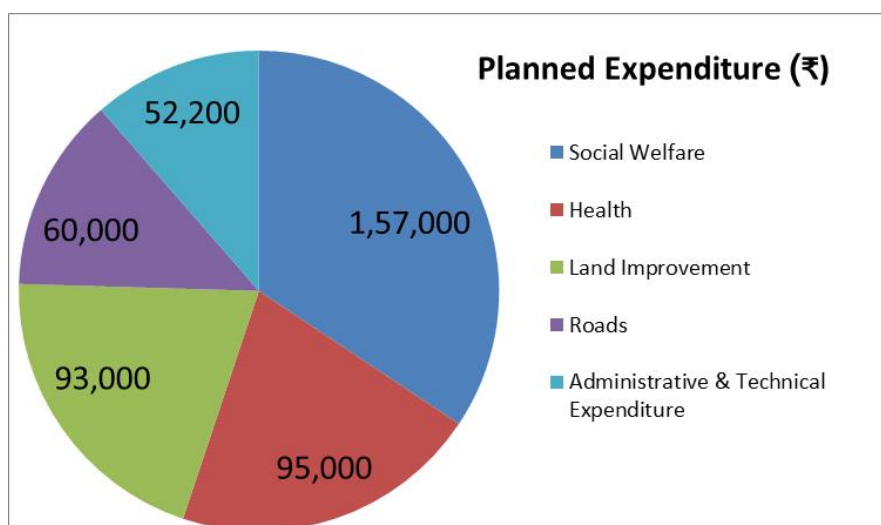
| SECTION 4 : Priority Wise Work Details |                                                                     |                                                                     |                                    |                   |                |                  |                              |          |                          |                         |                                                                  |              |         |         |
|----------------------------------------|---------------------------------------------------------------------|---------------------------------------------------------------------|------------------------------------|-------------------|----------------|------------------|------------------------------|----------|--------------------------|-------------------------|------------------------------------------------------------------|--------------|---------|---------|
| S.N o.                                 | Name of Activity                                                    | Activity Description                                                | Sector                             | Location of Asset | Estimated Cost | Financial Target | Total Duration               | Own Fund | Beneficiary Contribution | Outlay Under the Scheme | Scheme Fund                                                      |              |         |         |
|                                        |                                                                     |                                                                     |                                    |                   |                |                  |                              |          |                          |                         | Scheme Name                                                      | General Fund | SC Fund | ST Fund |
| 1.                                     | mandey pardhan up pardhn                                            | mandey pardhan up pardhn                                            | Administrative & Technical Support |                   | 13,200         | 13,200           | October 2017- September 2018 | 0        | 0                        | 13,200                  | Third State Finance Commission-Third State Finance Commission    | 13,200       | 0       | 0       |
| 2.                                     | contijence                                                          | contijence                                                          | Administrative & Technical Support |                   | 32,800         | 32,800           | August 2017-July 2018        | 0        | 0                        | 32,800                  | Fourteen Finance Commission-on-Basic Grant                       | 32,800       | 0       | 0       |
| 3.                                     | panchayat ghar k pas tin shed ka nirmaan                            | panchayat ghar k pas tin shed ka nirmaan                            | Land improvement                   | Niloti            | 70,000         | 70,000           | Febuary 2018-May 2018        | 0        | 0                        | 70,000                  | Third State Finance Commission-on-Third State Finance Commission | 70,000       | 0       | 0       |
| 4.                                     | panchayat ghar tak cc marg nirmaan                                  | panchayat ghar tak cc marg nirmaan                                  | Roads                              | Dubar Kamlaikh    | 53,000         | 53,000           | January 2018-May 2018        | 0        | 0                        | 53,000                  | Fourteen Finance Commission-on-Basic Grant                       | 53,000       | 0       | 0       |
| 5.                                     | panchayat ghar snanagaa r evam schochala ya nirmaan electrification | panchayat ghar snanagaa r evam schochala ya nirmaan electrification | Health and sanitation              | Dubar Kamlaikh    | 95,000         | 95,000           | December 2017- May 2018      | 0        | 0                        | 95,000                  | Fourteen Finance Commission-on-Basic Grant                       | 95,000       | 0       | 0       |
| 6.                                     | kriya sthal k pas tank nirmaan                                      | kriya sthal k pas tank nirmaan                                      | Drinking water                     | Burush Khola      | 52,000         | 52,000           | January 2018- March 2018     | 0        | 0                        | 52,000                  | Fourteen Finance Commission-on-Basic Grant                       | 52,000       | 0       | 0       |
| 7.                                     | cc marg nirmaan                                                     | cc marg nirmaan                                                     | Roads                              | Dubar Kamlaikh    | 95,000         | 95,000           | Febuary 2018-July 2018       | 0        | 0                        | 95,000                  | Fourteen Finance Commission-on-Basic Grant                       | 95,000       | 0       | 0       |



## ROULMEL

| Total Action Plan Report : RAILMEL Village Panchayat : 2017-2018 |    |         |       |        |    |          |          |          |        |                               |         |       |        |    |          |          |          |                          |
|------------------------------------------------------------------|----|---------|-------|--------|----|----------|----------|----------|--------|-------------------------------|---------|-------|--------|----|----------|----------|----------|--------------------------|
| SECTION 1 : Plan Summary                                         |    |         |       |        |    |          |          |          |        |                               |         |       |        |    |          |          |          |                          |
| Total Amount Allotted (In Rs.)                                   |    |         |       |        |    |          |          |          |        | Total Planned Outlay (In Rs.) |         |       |        |    |          |          |          |                          |
| Scheme                                                           |    |         |       |        |    |          |          | Own Fund | Scheme |                               |         |       |        |    |          |          | Own Fund | Beneficiary Contribution |
| Tied                                                             |    |         |       | Untied |    |          |          |          | Tied   |                               |         |       | Untied |    |          |          |          |                          |
| SC                                                               | ST | General | Total | SC     | ST | General  | Total    |          | SC     | ST                            | General | Total | SC     | ST | General  | Total    |          |                          |
| 0                                                                | 0  | 0       | 0     | 0      | 0  | 4,57,200 | 4,57,200 | 0        | 0      | 0                             | 0       | 0     | 0      | 0  | 4,57,200 | 4,57,200 | 0        | 0                        |

| SECTION 4 : Priority Wise Work Details |                                                  |                                                  |                                    |                   |                |                  |                              |          |                          |                         |                                                               |              |         |         |
|----------------------------------------|--------------------------------------------------|--------------------------------------------------|------------------------------------|-------------------|----------------|------------------|------------------------------|----------|--------------------------|-------------------------|---------------------------------------------------------------|--------------|---------|---------|
| S.N o.                                 | Name of Activity                                 | Activity Description                             | Sector                             | Location of Asset | Estimated Cost | Financial Target | Total Duration               | Own Fund | Beneficiary Contribution | Outlay Under the Scheme | Scheme Fund                                                   |              |         |         |
|                                        |                                                  |                                                  |                                    |                   |                |                  |                              |          |                          |                         | Scheme Name                                                   | General Fund | SC Fund | ST Fund |
| 1.                                     | mandey pardhan up pardhan                        | mandey pardhan up pardhan                        | Administrative & Technical Support |                   | 13,200         | 13,200           | August 2017-July 2018        | 0        | 0                        | 13,200                  | Third State Finance Commission-Third State Finance Commission | 13,200       | 0       | 0       |
| 2.                                     | contjence                                        | contjence                                        | Administrative & Technical Support |                   | 39,000         | 39,000           | December 2017- November 2018 | 0        | 0                        | 39,000                  | Fourteen Finance Commission-Basic Grant                       | 39,000       | 0       | 0       |
| 3.                                     | yatri shed nirmaan                               | yatri shed nirmaan                               | Land improvement                   | Rolmail           | 93,000         | 93,000           | August 2017- September 2017  | 0        | 0                        | 93,000                  | Fourteen Finance Commission-Basic Grant                       | 93,000       | 0       | 0       |
| 4.                                     | sarvajnik shochalay a aur snanagaa r nirmaan     | sarvajnik shochalay a aur snanagaa r nirmaan     | Health and sanitation              | Rolmail           | 95,000         | 95,000           | January 2018- June 2018      | 0        | 0                        | 95,000                  | Fourteen Finance Commission-Basic Grant                       | 95,000       | 0       | 0       |
| 5.                                     | puliya k pas suraksha diwaar aur cc marg nirmaan | puliya k pas suraksha diwaar aur cc marg nirmaan | Roads                              | Rolmail           | 60,000         | 60,000           | December 2017- May 2018      | 0        | 0                        | 60,000                  | Third State Finance Commission-Third State Finance Commission | 60,000       | 0       | 0       |
| 6.                                     | kriya sthal aur cc marg twada                    | kriya sthal aur cc marg twada                    | Social welfare                     | Rolmail           | 1,57,000       | 1,57,000         | January 2018- June 2018      | 0        | 0                        | 1,57,000                | Fourteen Finance Commission-Basic                             | 1,57,000     | 0       | 0       |



## SAKDENA

### Total Action Plan Report : SAKDENA Village Panchayat : 2017-2018

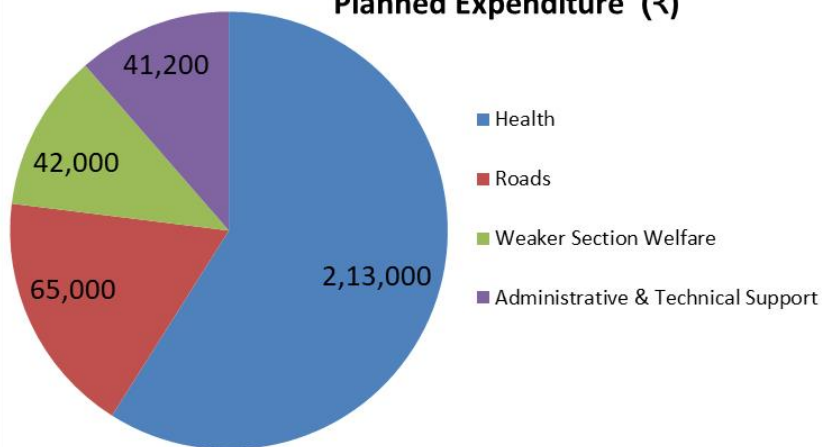
#### SECTION 1 : Plan Summary

| Total Amount Allotted (In Rs.) |    |         |       |        |    |          |          | Total Planned Outlay (In Rs.) |        |    |         |       |        |          |          |       |          |                          |
|--------------------------------|----|---------|-------|--------|----|----------|----------|-------------------------------|--------|----|---------|-------|--------|----------|----------|-------|----------|--------------------------|
| Scheme                         |    |         |       |        |    |          |          | Own Fund                      | Scheme |    |         |       |        |          |          |       | Own Fund | Beneficiary Contribution |
| Tied                           |    |         |       | Untied |    |          |          |                               | Tied   |    |         |       | Untied |          |          |       |          |                          |
| SC                             | ST | General | Total | SC     | ST | General  | Total    |                               | SC     | ST | General | Total | SC     | ST       | General  | Total |          |                          |
| 0                              | 0  | 0       | 0     | 0      | 0  | 3,61,200 | 3,61,200 | 0                             | 0      | 0  | 0       | 0     | 0      | 3,61,200 | 3,61,200 | 0     | 0        |                          |

#### SECTION 4 : Priority Wise Work Details

| S.N o. | Name of Activity                                            | Activity Description                                        | Sector                             | Location of Asset | Estimated Cost | Financial Target | Total Duration             | Own Fund | Beneficiary Contribution | Outlay Under the Scheme | Scheme Fund                                                   |              |         |         |
|--------|-------------------------------------------------------------|-------------------------------------------------------------|------------------------------------|-------------------|----------------|------------------|----------------------------|----------|--------------------------|-------------------------|---------------------------------------------------------------|--------------|---------|---------|
|        |                                                             |                                                             |                                    |                   |                |                  |                            |          |                          |                         | Scheme Name                                                   | General Fund | SC Fund | ST Fund |
| 1.     | puliya nirman                                               | puliya nirman                                               | Roads                              | Sakdena           | 65,000         | 65,000           | October 2017-October 2017  | 0        | 0                        | 65,000                  | Third State Finance Commission-Third State Finance Commission | 65,000       | 0       | 0       |
| 2.     | mandey pardhan up pardhan                                   | mandey pardhan up pardhan                                   | Administrative & Technical Support |                   | 13,200         | 13,200           | September 2017-August 2018 | 0        | 0                        | 13,200                  | Third State Finance Commission-Third State Finance Commission | 13,200       | 0       | 0       |
| 3.     | contijence                                                  | contijence                                                  | Administrative & Technical Support |                   | 28,000         | 28,000           | August 2017-July 2018      | 0        | 0                        | 28,000                  | Fourteen Finance Commission-Basic Grant                       | 28,000       | 0       | 0       |
| 4.     | naula nirman kary                                           | naula nirman kary                                           | Welfare of the weaker sections     | Sakdena           | 42,000         | 42,000           | August 2017-August 2017    | 0        | 0                        | 42,000                  | Fourteen Finance Commission-Basic Grant                       | 42,000       | 0       | 0       |
| 5.     | bagyuda tok sarvajanik schochala ya aur snananga ar nirmaan | bagyuda tok sarvajanik schochala ya aur snananga ar nirmaan | Health and sanitation              | Sakdena           | 80,000         | 80,000           | February 2018-July 2018    | 0        | 0                        | 80,000                  | Fourteen Finance Commission-Basic Grant                       | 80,000       | 0       | 0       |
| 6.     | tosh aur                                                    | tosh aur                                                    | Health                             | Sakdena           | 1,33,000       | 1,33,000         | January                    | 0        | 0                        | 1,33,000                | Fourteen                                                      | 1,33,000     | 0       | 0       |

#### Planned Expenditure (₹)





## TAK BALWARI

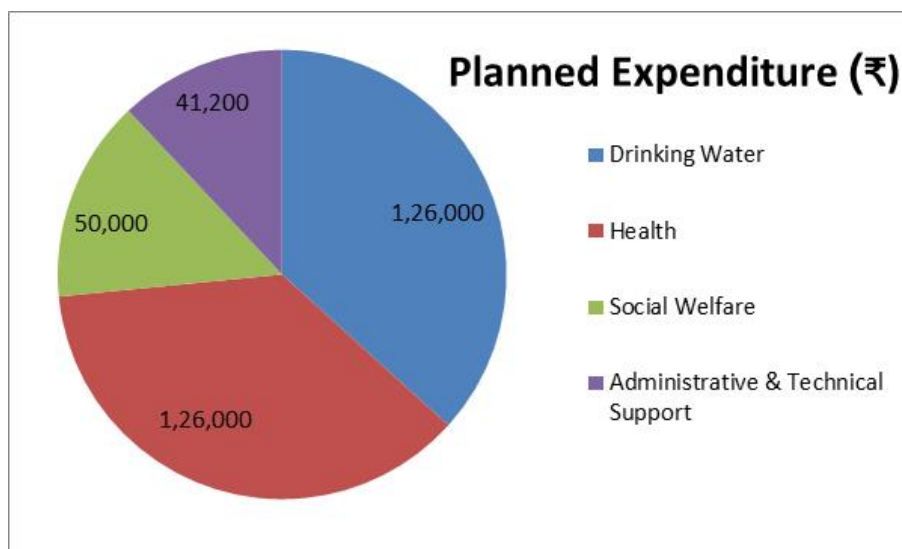
Total Action Plan Report : TAKBALWARI Village Panchayat : 2017-2018

### SECTION 1 : Plan Summary

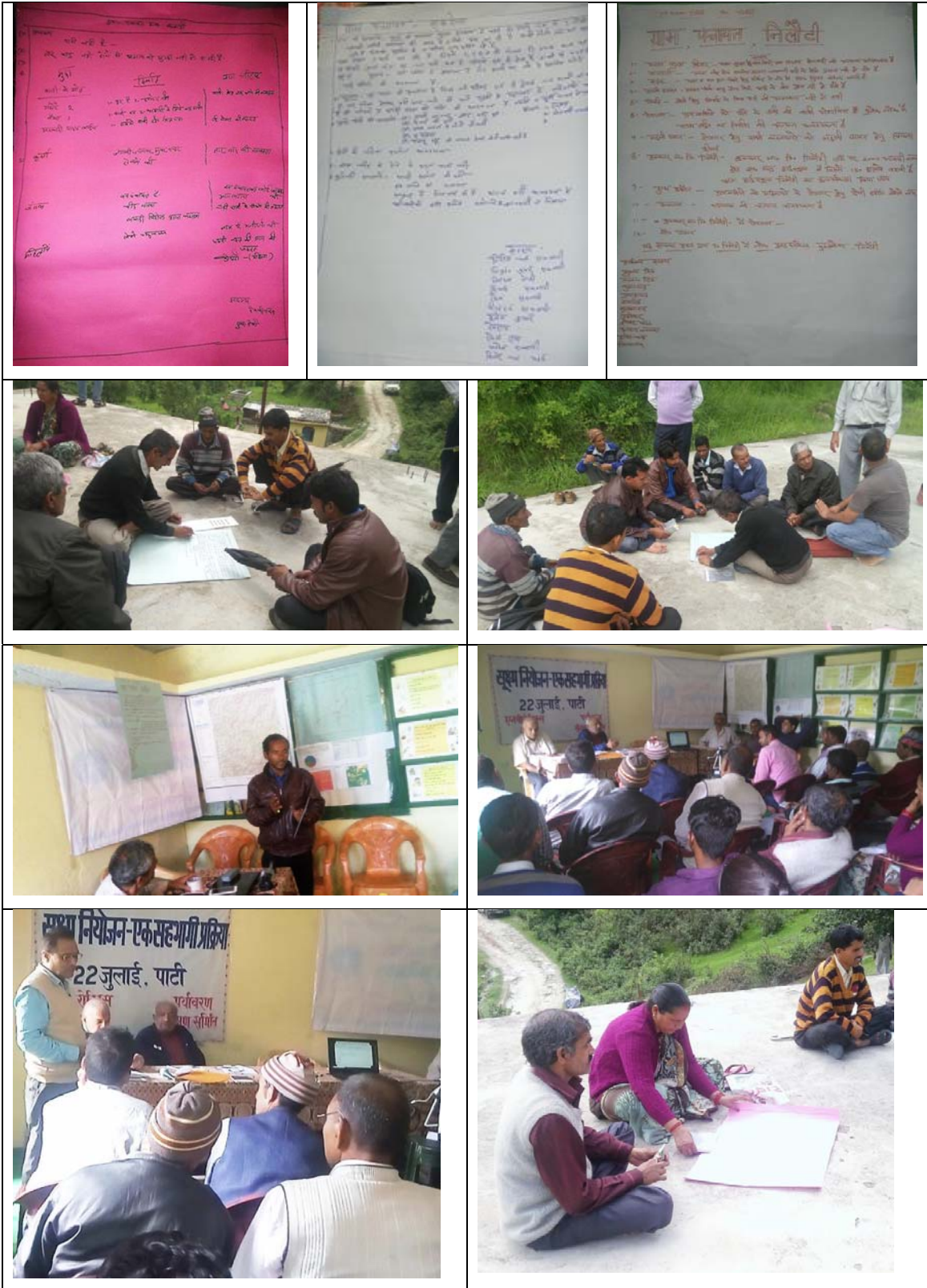
| Total Amount Allotted (In Rs.) |    |         |       |        |    |          |          | Total Planned Outlay (In Rs.) |        |    |         |       |        |          |          | Own Fund | Beneficiary Contribution |       |
|--------------------------------|----|---------|-------|--------|----|----------|----------|-------------------------------|--------|----|---------|-------|--------|----------|----------|----------|--------------------------|-------|
| Scheme                         |    |         |       |        |    |          |          | Own Fund                      | Scheme |    |         |       |        |          |          |          |                          |       |
| Tied                           |    |         |       | Untied |    |          |          |                               | Tied   |    |         |       | Untied |          |          |          |                          |       |
| SC                             | ST | General | Total | SC     | ST | General  | Total    |                               | SC     | ST | General | Total | SC     | ST       | General  |          |                          | Total |
| 0                              | 0  | 0       | 0     | 0      | 0  | 3,43,200 | 3,43,200 | 0                             | 0      | 0  | 0       | 0     | 0      | 3,43,200 | 3,43,200 | 0        | 0                        |       |

### SECTION 4 : Priority Wise Work Details

| S.N o. | Name of Activity                                    | Activity Description                                | Sector                             | Location of Asset | Estimated Cost | Financial Target | Total Duration           | Own Fund | Beneficiary Contribution | Outlay Under the Scheme | Scheme Fund                                                   |              |         |         |
|--------|-----------------------------------------------------|-----------------------------------------------------|------------------------------------|-------------------|----------------|------------------|--------------------------|----------|--------------------------|-------------------------|---------------------------------------------------------------|--------------|---------|---------|
|        |                                                     |                                                     |                                    |                   |                |                  |                          |          |                          |                         | Scheme Name                                                   | General Fund | SC Fund | ST Fund |
| 1.     | naula marmt                                         | naula marmt                                         | Social welfare                     |                   | 50,000         | 50,000           | August 2017- August 2017 | 0        | 0                        | 50,000                  | Third State Finance Commission-Third State Finance Commission | 50,000       | 0       | 0       |
| 2.     | mandey pardhan up pardhan                           | mandey pardhan up pardhan                           | Administrative & Technical Support |                   | 13,200         | 13,200           | July 2017- June 2018     | 0        | 0                        | 13,200                  | Third State Finance Commission-Third State Finance Commission | 13,200       | 0       | 0       |
| 3.     | contijence                                          | contijence                                          | Administrative & Technical Support |                   | 28,000         | 28,000           | July 2017- June 2018     | 0        | 0                        | 28,000                  | Fourteen Finance Commission-Basic Grant                       | 28,000       | 0       | 0       |
| 4.     | payjal line aur tank nirmaan                        | payjal line aur tank nirmaan                        | Drinking water                     | Takbalwar         | 1,26,000       | 1,26,000         | January 2018- June 2018  | 0        | 0                        | 1,26,000                | Fourteen Finance Commission-Basic Grant                       | 1,26,000     | 0       | 0       |
| 5.     | saravajani k schochala ya aur snanagar dhariyap tok | saravajani k schochala ya aur snanagar dhariyap tok | Health and sanitation              | Takbalwar         | 1,26,000       | 1,26,000         | January 2018- June 2018  | 0        | 0                        | 1,26,000                | Fourteen Finance Commission-Basic Grant                       | 1,26,000     | 0       | 0       |



## ANNEXURE – GROUP WORK







*The framework is flexible to adaptation at local level (hydrological unit) as the needs assessment presented a scenario requiring interventions at all levels viz. resource enhancement to resource diversification and from livelihood improvement to market mechanisms to make it economically relevant and locally sustainable. The Sustainable Development Goal 15 closely gets associated with the thought process and the framework and the situations described in the sections of this micro plan.*

*SDG 15 – Protect, restore and promote sustainable use of terrestrial ecosystems, sustainably manage forests, combat desertification, and halt and reverse land degradation and halt biodiversity loss.*



Khasra No.177, Shokeen Market, Neb Sarai,  
Main IGNOU Road New Delhi- 110068 INDIA  
Telefax: 91-11-29531814, 91-11-29533957  
Email: [info@environicsindia.in](mailto:info@environicsindia.in)