

Air Pollution – Brief Analysis for September 2023

With the end of monsoon season, Air pollution has started deteriorating in the country esp. in the northern part of the country. Air pollution is a big issue and needs to be handled urgently. Air sheds which stretch across geographical boundaries need to be understood and plans made. Every stakeholder needs to ensure that all plans which have been made are implemented rigorously and any violation is strictly punished irrespective of politics. Air pollution impacts both rich and poor and it is imperative that steps are taken urgently. Use of purifiers and masks are the last resort and these options are not available to everyone. Pollution hotspots and sources are known, numerous source apportionment studies have been done. Instead of laying blame on one another, it is necessary to tackle the root cause of the problem urgently for the sake of everyone so that air quality improves all year round.

Below is a brief representation of data captured by portable devices installed in multiple locations in Korba and Delhi. The analysis has been done for two reporting periods – 1 September to 31 September 2023 and Jan 2022 to September 2023.

Section 1 – Data Analysis for period Jan 2022 to September 2023

	Jan	Feb	Mar	Apr	May	Jun	Jul	Aug	Sep	Oct	Nov	Dec	Jan-23	Feb-23	Mar-23	Apr-23	May-23	Jun-23	Jul-23	Aug-23	Sep-23
Korba	344	239	304	256	102	118	72	80	93	204	320	318	319	283	245	197	124	94	63	67	88
Delhi	355	303	218	133	98	75	71	67	85	323	380	372	412	328	198	125	124	71	80	62	85
Ranchi							200	81	77	159	158	198									

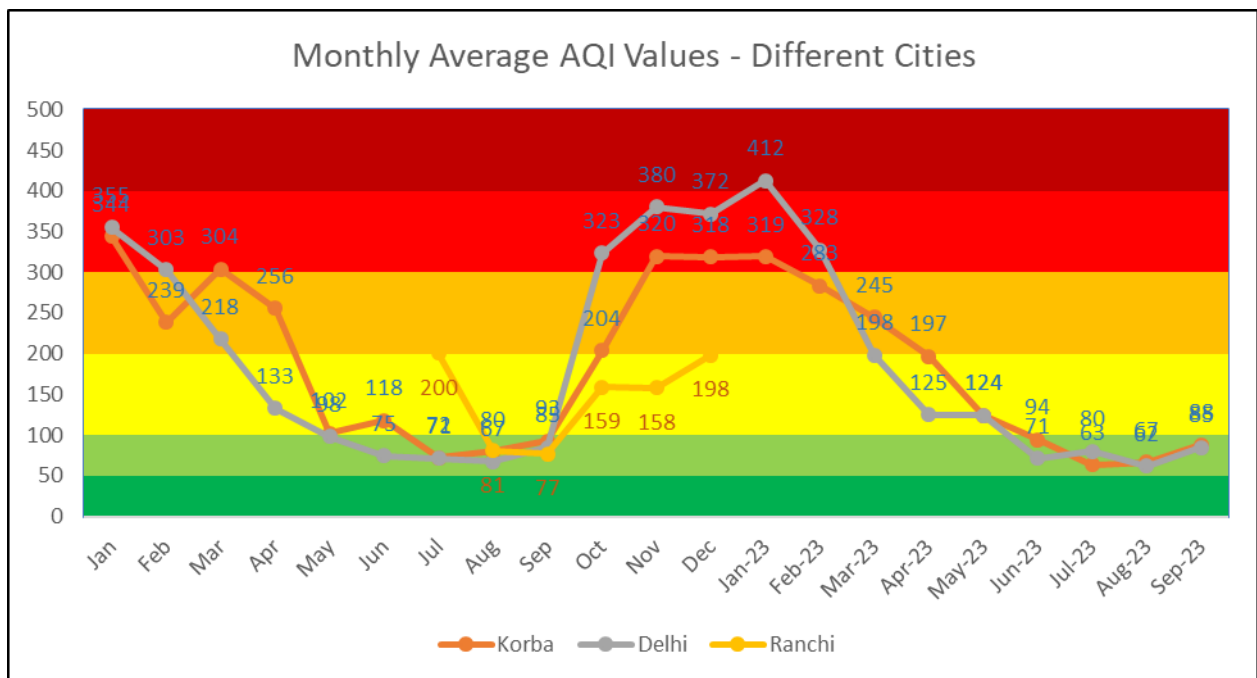


Table and Graph above show the Average Monthly AQI in different Cities. The graph and data clearly showcase the winter months when AQI comes under dangerous levels and summer and monsoon months when the air quality is Satisfactory. It is clear that AQI increases with the onset of winter and decreases as summer progresses. With the onset of monsoon, there is further improvement. This improvement in Air quality is primarily because of favourable weather conditions and not because of any mitigation aspects taken by the industries or government agencies. It is again approaching the time of the year when AQI has started going up.

- During this period, Delhi recorded the worst AQI in the month of January 2023. Out of 21 months, for 13-months AQI in Delhi was above 100 while Korba had AQI above 100 for 15 months.
- September 2023 Air quality has deteriorated over the previous month figures for both Korba and Delhi.
- Air quality is poorer in Korba as compared to Delhi in September 2023
- The overall data for Korba shows that Korba Air is more polluted than Delhi for longer durations in the year.
- In comparison with September 2023 and 2022, AQI has decreased in Korba while it is same in Delhi
- The different colour bands in the graph respond to the AQI categories as stated in the NAAQs (More later in the document)

Monthly Average HI - Different Cities																					
	Jan	Feb	Mar	Apr	May	Jun	Jul	Aug	Sep	Oct	Nov	Dec	Jan-23	Feb-23	Mar-23	Apr-23	May-23	Jun-23	Jul-23	Aug-23	Sep-23
Korba	19	24	29	36	40	39	37	35	35	30	23	21	21	24	29	32	35	40	39	35	34
Delhi	17	20	26	32	35	36	39	37	36	28	24	18	16	21	25	29	32	38	39	38	37
Ranchi							31	30	29	24	20	18	-	-			-	-	-		

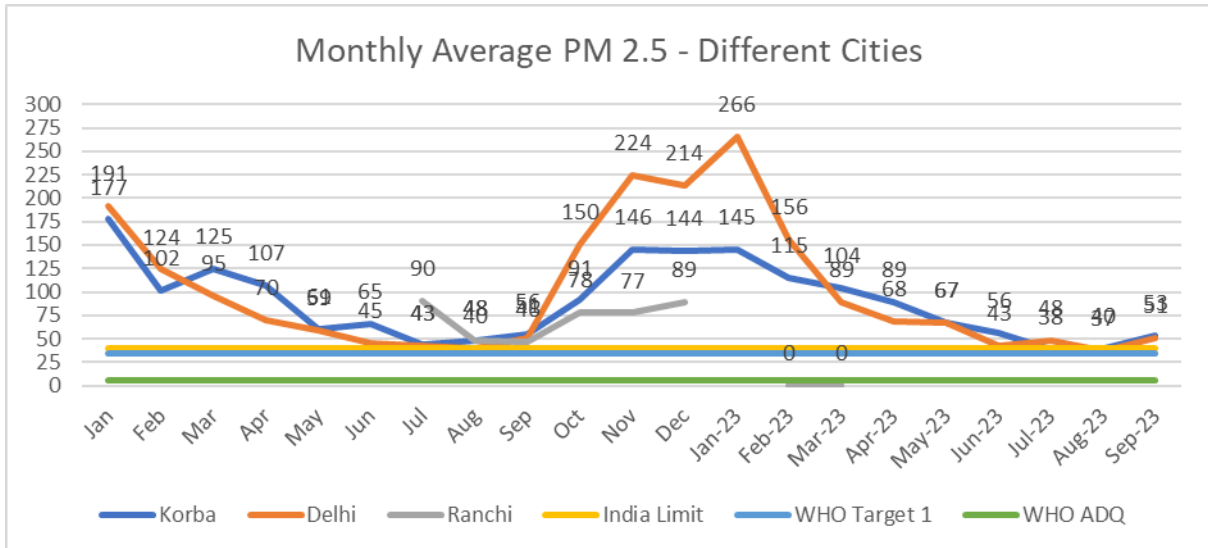
The above table shows the Monthly Average Heat Index for different cities.

Particulate Matter – Particulate matter or PM is the amount of dust particles in the air. These particles can be of different types i.e. organic, metallic etc. There are different sizes for these particles. Particles of size 10 micron are called PM 10. Those between size of 2.5 and 10 micron are called PM 2.5. those between 1 and 2.5 micron are labelled as PM1. The smaller the size of the particles, the easier for it to enter the air stream of the body and cause more impact. NAAQS and WHO (World Health Organisation) have both set limits for amount of such particles in the air for PM 2.5 and PM 10. Below are the limits set. The Indian standard values are much higher than the WHO ADQ standard and need to be revised downwards. There are no standards yet for PM 1 which is considerably more harmful.

	PM 2.5 (ug/m3)	PM 10 (ug/m3)
NAAQS (India Annual target)	40	60
WHO Interim target 1	35	70
WHO ADQ Target	5	15

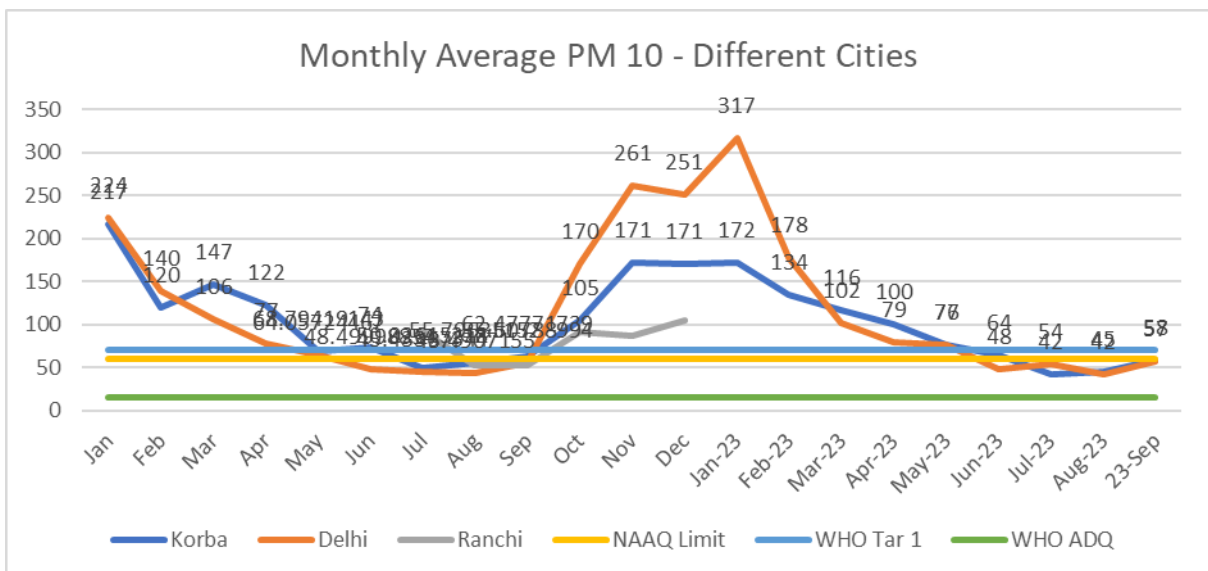
Below is the table and graph showing Monthly Average PM 2.5 values in different cities. In only 1 month in both Korba and Delhi was the Indian standard met. In both Delhi and Korba, the values were more than 4 times the values in some of the months. Only during the monsoon period were the values closer to the standard but were still above. In both Delhi and Korba count of PM 2.5 particles have decreased in comparison with September 2022.

Monthly Average PM 2.5 - Different Cities																					
	Jan	Feb	Mar	Apr	May	Jun	Jul	Aug	Sep	Oct	Nov	Dec	Jan-23	Feb-23	Mar-23	Apr-23	May-23	Jun-23	Jul-23	Aug-23	Sep-23
Korba	177	102	125	107	61	65	43	48	56	91	146	144	145	115	104	89	67	56	38	40	53
Delhi	191	124	95	70	59	45	43	40	51	150	224	214	266	156	89	68	67	43	48	37	51
Ranchi							90	48	46	78	77	89		-	-						



The table and graph below show the Monthly Average PM 10 values in different cities. Except for a few months (Highlighted in Green) which were during the summer and monsoon months, none of the cities met the Indian Standards. In comparison with the WHO ADQ standard, none even came close. Although values have improved in Korba while they have increased in Delhi as compared to September 2022, values are still high. This shows that the base load of pollutants is very high in both these cities and dust which settles during rains is again air borne once the rain stops and sun comes out. Values have increased in comparison to August 2023

	Jan	Feb	Mar	Apr	May	Jun	Jul	Aug	Sep	Oct	Nov	Dec	Jan-23	Feb-23	Mar-23	Apr-23	May-23	Jun-23	Jul-23	Aug-23	23-Sep	
Korba	217	120	147	122	68.8	74	50	55.8	62.5	105	171	171	172	134	116	100	76	64	42	45	58	
Delhi	224	140	106	77	64.1	48.5	45.4	43.5	55.6	170	261	251	317	178	102	79	77	48	54	42	57	
Ranchi							92	52	52.4	91	87	104										



Data on AQI categories – Under the NAAQS, AQI categories have been listed which lists the different levels of Air pollution. AQI Classification as per NAAQS -

0-50	51-100	101-200	201-300	301-400	>401
------	--------	---------	---------	---------	------

The Table below shows the AQI Categories for All device's location wise since January 2022. The numbers are daily figures for individual devices which have been added up based on cities. It means that AQI in Korba was between 0-50 on 408 daily intervals as recorded by all devices installed in Korba. The data shows that in all locations more than 60% of the days, AQI has been above 100. Delhi and Korba recorded more than 31% of the intervals with AQI above 200.

Location wise Totals (Since January 2022)									
	0-50	50-100	100-200	200-300	300-400	>400	Grand Total	Percent >100	>200
Korba	444	1298	1951	1044	637	195	5569	68.72%	33.69%
Delhi	565	1176	1240	670	436	256	4343	59.91%	31.36%
Ranchi	4	30	63	11	2	0	110	69.09%	11.82%

The Table below show City wise and month wise AQI categories wise information. The numbers are daily figures for individual devices which have been added up based on locations for each month. It means that AQI in Korba was between 50-100 on 12 daily intervals in January 2022 as recorded by all devices installed in Korba. The data shows the severe AQI months for both Korba and Delhi. Atmospheric conditions play a vital role in Air Pollution hence, AQI is Satisfactory in the summer and monsoon month when dispersion of pollutants is high. Weather conditions along with emission sources should be carefully considered and emissions controlled to ensure AQI remains below 100 throughout the year.

In Delhi, during September 2023, 37% of recorded AQI intervals were above 100 while the figure is 35% for Korba. Both figures show an increase in comparison with August 2023. The corresponding figure in September '22 for Delhi was 38% and 30% for Korba.

		0-50	50-100	100-200	200-300	300-400	>400	Grand Total	Percent >100	Percent >200
Korba	Jan	0	12	36	48	31	6	133	91%	64%
	Feb	0	22	118	102	19	4	265	92%	47%
	Mar	0	28	99	56	29	16	228	88%	44%
	Apr	2	13	72	55	27	6	175	91%	50%
	May	4	70	101	9	0	0	184	60%	5%
	June	3	68	113	21	0	0	205	65%	10%
	July	50	74	46	5	0	0	175	29%	3%
	Aug	58	61	52	13	1	0	185	36%	8%
	Sep	19	68	35	2	0	0	124	30%	2%
	Oct	25	63	127	72	44	13	344	74%	38%
	Nov	3	23	64	115	141	40	386	93%	77%
	Dec	0	21	99	112	90	47	369	94%	67%
	Jan-23	0	9	97	117	113	27	363	98%	71%
	Feb-23	2	38	149	82	38	20	329	88%	43%
	Mar-23	2	32	157	113	56	6	366	91%	48%
	Apr-23	11	111	150	63	34	8	377	68%	28%
	May-23	11	105	213	27	10	2	368	68%	11%
	Jun-23	35	163	115	12	2	0	327	39%	4%
	Jul-23	124	116	30	4	0	0	274	12%	1%
	Aug-23	59	111	24	3	0	0	197	14%	2%
	Sep-23	36	90	54	13	2	0	195	35%	8%

	Oct-23	0	0	0	0	0	0	0	-	-
	Nov-23	0	0	0	0	0	0	0	-	-
	Dec-23	0	0	0	0	0	0	0	-	-
Delhi	Jan	0	2	20	88	101	81	292	99%	92%
	Feb	15	32	74	96	85	14	316	85%	62%
	Mar	2	49	172	145	27	0	395	87%	44%
	Apr	10	85	219	59	0	0	373	75%	16%
	May	44	119	187	12	0	0	362	55%	3%
	June	152	134	63	9	3	1	362	21%	4%
	July	76	192	71	5	0	0	344	22%	1%
	Aug	47	83	29	0	0	0	159	18%	0%
	Sep	24	50	38	7	0	0	119	38%	6%
	Oct	10	13	16	31	24	21	115	80%	66%
	Nov	0	0	5	26	57	32	120	100%	96%
	Dec	0	0	7	20	58	39	124	100%	94%
	Jan-23	0	0	3	21	44	56	124	100%	98%
	Feb-23	0	4	17	44	35	12	112	96%	81%
	Mar-23	1	14	55	51	1	0	122	88%	43%
	Apr-23	5	40	84	16	1	0	146	69%	12%
	May-23	26	54	45	30	0	0	155	48%	19%
	Jun-23	37	82	29	1	0	0	149	20%	1%
	Jul-23	22	90	41	2	0	0	155	28%	1%
	Aug-23	61	74	17	0	0	0	152	11%	0%
	Sep-23	33	59	48	7	0	0	147	37%	5%

The Table below show Device wise AQI categories wise information. The numbers are daily figures for individual devices which have been added up till date. It means that AQI measured by device number ending with 66644 was between 50-100 on 41 daily intervals. Except for one device all devices are measuring AQI above 100 for majority of the intervals in Korba.

Device Wise Totals (Selected Devices) – Since January 2022									
	0-50	50-100	100-200	200-300	300-400	>400	Grand Total	Percent >100	Percent >200
861480034766644	14	41	129	53	60	33	330	83.33%	44.24%
861480034786105	21	71	213	141	84	11	541	82.99%	43.62%
861480034775850	65	223	192	94	32	1	607	52.55%	20.92%
861480034777765	9	48	103	51	17	3	231	75.32%	30.74%
861480034765562	83	164	197	73	22	0	539	54.17%	17.63%
861480034757130	32	108	187	43	8	2	380	63.16%	13.95%
862649042673930	1	59	143	85	28	8	324	81.48%	37.35%
861480034765406	21	27	183	155	51	16	453	89.40%	49.01%
861480034774176	7	55	109	73	51	3	298	79.19%	42.62%
862649042685215	37	107	86	12	3	2	247	41.70%	6.88%
861480034766461	38	170	163	120	77	69	637	67.35%	41.76%
861480034784522	87	167	164	76	53	35	582	56.36%	28.18%
862649043466961	82	168	166	88	74	45	623	59.87%	33.23%
861480034785552	106	162	135	92	77	31	603	55.56%	33.17%

Section 2 –Information and Analysis for September 2023

Location wise Information				
Location	Average PM 2.5	Average PM 10	Average AQI	Maximum AQI

Korba	53	58	88	2180
Delhi	51	57	85	1230

Table above shows the city wise Average PM 2.5, PM 10, AQI and Maximum AQI for September 2023. During this period Maximum AQI is recorded highest in Korba which is recorded just above 2000. Although such high numbers have been recorded only for a few intervals but getting such high number for AQI is a matter of grave concern. In Delhi also, the Maximum AQI recorded has exceeded 1000 which is a matter of concern and immediate action. Average AQI is higher in Korba.

Comparison of data between September 2022 and September 2023 can be seen in table below. The air quality is same in Delhi while there is a slight improvement in Delhi. This clearly shows the impact of monsoon and winds on the Air pollution in Delhi. As soon as weather elements become adverse, pollution starts rising.

	Sep-22			Sep-23		
	PM 2.5	PM 10	AQI	PM 2.5	PM 10	AQI
Korba	56	62	93	53	58	88
Delhi	51	56	85	51	57	85

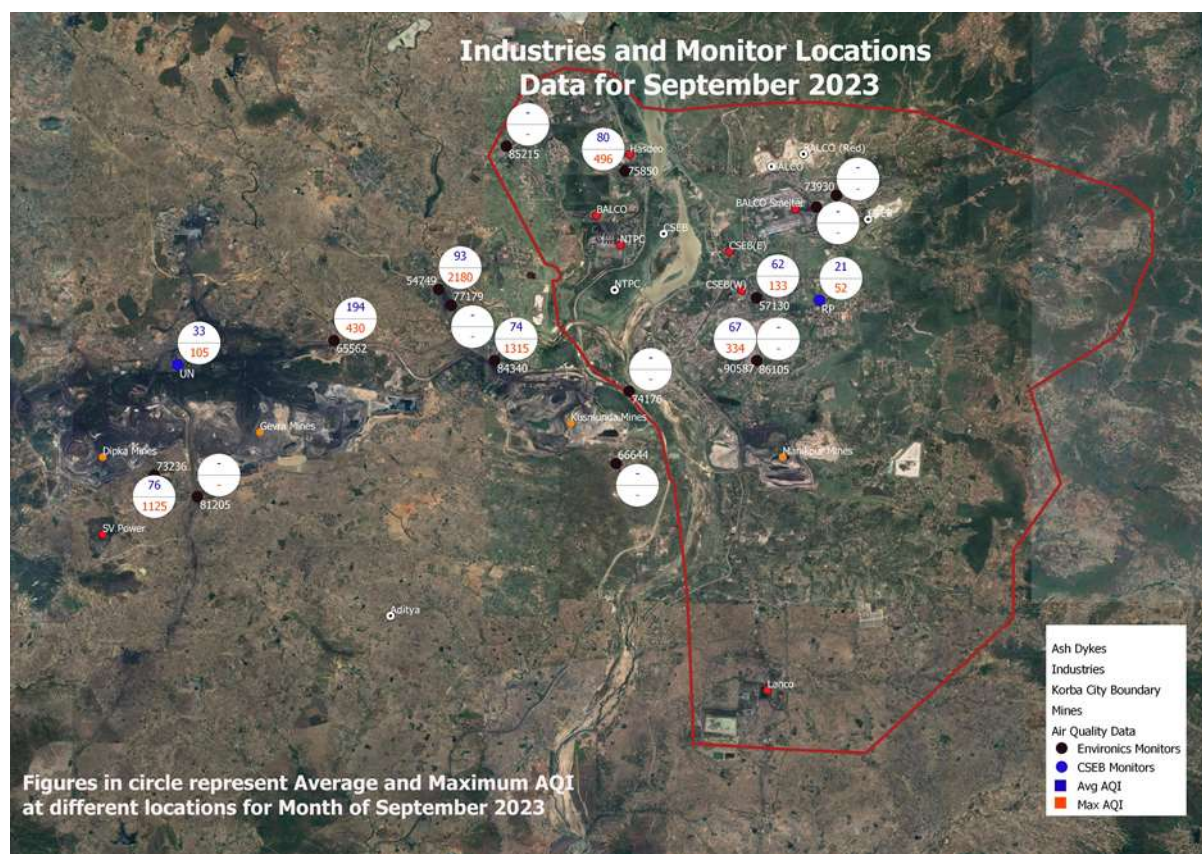
Data for individual devices placed at Korba can be seen in below table. Out of 8 devices which worked in Korba in this period 3 devices recorded maximum AQI greater than 1000. Average Monthly AQI is above 100 in 2 locations. Device placed at Gevra Rehabilitated Area recorded the highest Average AQI at 194. Device placed at Korba City measured the best AQI at 62

Location Wise Average and Maximum AQI for Devices at Korba			
Device Number	Location	Average AQI	Maximum AQI
861480034766644	Village Pali	-	-
861480034786105	RSS nagar	-	-
861480034775850	Child Home Darri	80	496
861480034777765	Sirki. Dipka Rehab Colony	161	555
861480034765562	Gevra Mines Rehabilitated Area	194	430
861480034757130	Korba City, Patharipara	62	133
862649042673930	Balco Housing Board	-	-
861480034765406	Vijaynagar. Gevra Rehab Colony	-	-
861480034774176	Old Age Home, Near Sarvmangla Mandir	-	-
862649042685215	NTPC Jamnipalli Housing Colony	-	-
861480034781205	sarai singar chowk	-	-
861480034777179	Surakachar chowk (underground Mines)	-	-
861480034784340	Kanha Auto repairs, Station road	74	1315
861480034773236	Aryan Public School, Hardi Bazaar	76	1125
862649042690587	BALCO, Ring Road	67	334
861480034754749	Gud Deva	93	2180

The map image below shows the locations of the devices installed in Korba along with the locations of major coal mines, Thermal power plants and ash dykes. The Korba municipal boundary is marked in Red colour. The numbers in the map show the Average and Maximum AQI for each location along with the device number. Two monitors have been installed by CSEB at Ram Pur and Urja Nagar.

Average Monthly AQI for September 2023 recorded by these devices is as below. Devices placed by Environics have been consistently recording higher AQI values. It may be because of placement of devices around Pollution sources which show such stark differences

	Ram Pur	Urja Nagar	ET Devices
September 2023	21	33	88



Map – Device Install and industrial locations at Korba. Numbers reflect Average and Maximum AQI of the location for September 2023. Map also shows the location of major coal mines, Thermal Power Plants and Ash Dykes. Korba Municipal Boundary is marked in Red colour

Daily average AQI for Different Cities for September 2023																
	1	2	3	4	5	6	7	8	9	10	11	12	13	14	15	16
Korba	76	80	72	72	86	61	70	74	90	78	78	89	107	48	84	92
Delhi	53	43	49	45	61	48	67	50	39	41	70	87	132	153	79	57

Daily average AQI for Different Cities for September 2023														
	17	18	19	20	21	22	23	24	25	26	27	28	29	30
Korba	91	63	77	81	55	87	109	99	83	135	198	220	100	89
Delhi	67	44	52	86	88	126	143	160	162	188	80	100	152	128

The Tables above show Daily Average AQI between different cities for September 2023. Cells where AQI >100 have been highlighted. AQI in Delhi was the lowest at 39 and went up to 188. Even in Korba, AQI has been between 48 and 220. Both Korba and Delhi are fighting for the top spot in bad air quality with Korba edging out Delhi in number of bad air days in this month. This information in terms of AQI categories can be seen in the table below

	0-50	51-100	101-200	201-300	301-400	>401	Not Work	Total
Korba	1	24	4	1	0	0	0	30
Delhi	7	13	10	0	0	0	0	30

Table - City wise categories for September 2023

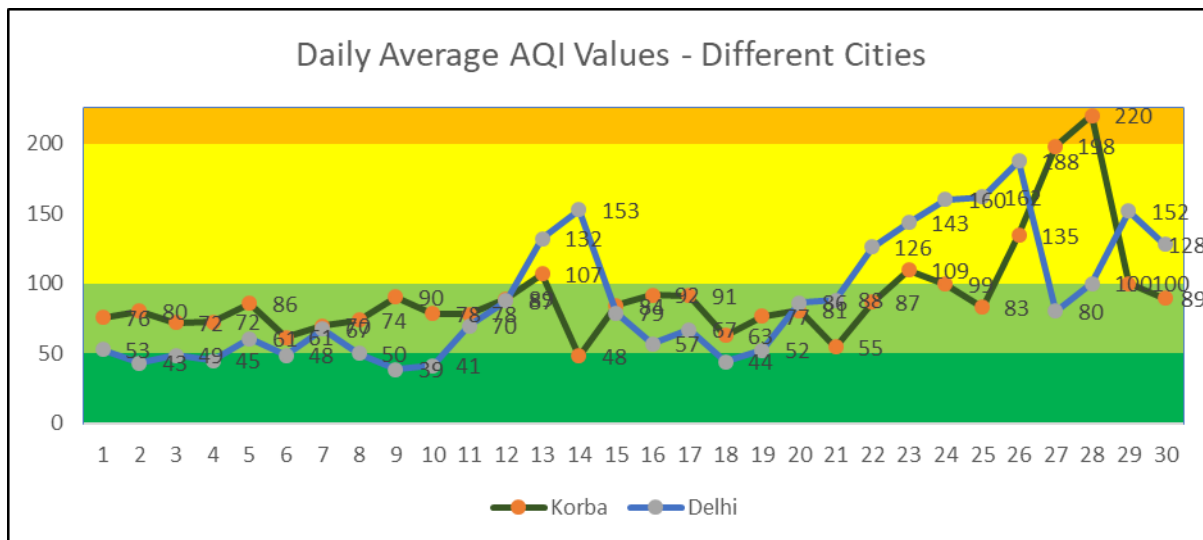


Table below shows the Daily Average AQI for individual devices placed at Korba. Figures above 250 have been marked in Red. Blank implies device did not work

Average AQI, Device Wise at Korba for September 2023																
Date	66644	86105	75850	77765	65562	57130	73930	65406	74176	85215	81205	77179	84340	73236	90587	54749
1	-	-	70	103	159		-	-	-	-	-	-	86	50	59	59
2	-	-	77	129	230		-	-	-	-	-	-	68	50	62	57
3	-	-	69	106	189	31	-	-	-	-	-	-	70	54	44	58
4	-	-	58	148	224	21	-	-	-	-	-	-	70	40	47	26
5	-	-	64	46	259	89	-	-	-	-	-	-	47	44	40	
6	-	-	36		148		-	-	-	-	-	-	34	50	23	104
7	-	-	63		153	23	-	-	-	-	-	-	66	62	39	107
8	-	-	67		153		-	-	-	-	-	-	52	60	38	115
9	-	-	72		209		-	-	-	-	-	-	72	68	33	131
10	-	-	58		169		-	-	-	-	-	-	47	67	40	115
11	-	-	80		144		-	-	-	-	-	-	61	87	80	62
12	-	-	73	146	192		-	-	-	-	-	-	47	92	78	68
13	-	-	119	153			-	-	-	-	-	-	81	75	89	149
14	-	-	36	81			-	-	-	-	-	-	44	42	45	44
15	-	-	63	75	222		-	-	-	-	-	-	58	52	23	129
16	-	-	88	152	233		-	-	-	-	-	-	58	77	73	65
17	-	-	95	135	203		-	-	-	-	-	-	78		69	58
18	-	-	36	76	197		-	-	-	-	-	-	49	40	41	54
19	-	-	43	110	181		-	-	-	-	-	-	44	75	62	67
20	-	-	56		188		-	-	-	-	-	-	56	69	78	121
21	-	-	42				-	-	-	-	-	-	98	56	53	37
22	-	-	57				-	-	-	-	-	-	107	64	58	114
23	-	-	96		166		-	-	-	-	-	-	157	62	78	68

24	-	-	102		144		-	-	-	-	-	-	61	83	62	186
25	-	-	99				-	-	-	-	-	-	74	114	72	86
26	-	-	119	256	175		-	-	-	-	-	-	76	145	104	119
27	-	-	166	333	240		-	-	-	-	-	-	125	187	106	134
28	-	-	206	321	263		-	-	-	-	-	-	123	154	194	127
29	-	-	79	211	227		-	-	-	-	-	-	76	89	73	84
30	-	-	57	164	135		-	-	-	-	-	-	111	63	81	83

Table - AQI Category wise information for individual devices

AQI categories Wise Information for Different Devices - September 2023										
Device Number	Location	0-50	50-100	100-200	200-300	300-400	>400	Grand Total	Percent >100	Percent >200
861480034766644	Korba	-	-	-	-	-	-	0	-	-
861480034786105	Korba	-	-	-	-	-	-	0	-	-
861480034775850	Korba	5	20	4	1			30	17%	3%
861480034777765	Korba	1	3	10	2	2		18	78%	22%
861480034765562	Korba			15	10			25	100%	40%
861480034757130	Korba	3	1					4	0%	0%
862649042673930	Korba	-	-	-	-	-	-	0	-	-
861480034765406	Korba	-	-	-	-	-	-	0	-	-
861480034774176	Korba	-	-	-	-	-	-	0	-	-
862649042685215	Korba	-	-	-	-	-	-	0	-	-
861480034781205	Korba	-	-	-	-	-	-	0	-	-
861480034777179	Korba	-	-	-	-	-	-	0	-	-
861480034784340	Korba	7	18	5				30	17%	0%
861480034773236	Korba	6	19	4				29	14%	0%
862649042690587	Korba	11	16	3				30	10%	0%
861480034754749	Korba	3	13	13				29	45%	0%
861480034766461	Delhi		15	12	3			30	50%	10%
861480034784522	Delhi	8	12	10				30	33%	0%
862649043466961	Delhi	8	9	12	1			30	43%	3%
861480034785552	Delhi	14	14	1				29	3%	0%
861480034766453	Delhi	3	9	13	3			28	57%	11%

Time Interval Wise Average AQI at different Cities and devices for September 2023 can be seen in table below

Row Labels	Midnight to 6 AM	6 AM to 12 Noon	12 Noon to 6 PM	6 PM to midnight
Delhi	100	112	85	94
_66453	121	143	110	106
_66461	119	137	87	116
_66961	103	107	96	97
_84522	98	95	60	89
_85552	56	71	65	56
Korba	85	107	90	112
_54749	63	95	104	102
_57130				62
_65562	181	195	185	212

_73236	70	102	58	72
_75850	61	82	61	113
_77765	146	170	158	168
_84340	60	88	68	79
_90587	58	80	58	70

Time Interval Wise Maximum AQI at different Cities and devices for September 2023 can be seen in table below

Row Labels	Midnight to 6 AM	6 AM to 12 Noon	12 Noon to 6 PM	6 PM to midnight
Delhi	1220	1163	1230	1228
_66453	330	370	366	1178
_66461	1220	1163	1230	1228
_66961	315	374	355	361
_84522	421	373	280	347
_85552	230	347	331	315
Korba	1125	1525	2180	1063
_54749	899	1525	2180	776
_57130				133
_65562	337	430	391	362
_73236	1125	938	413	586
_75850	358	342	320	496
_77765	441	555	514	511
_84340	763	566	1315	1063
_90587	267	331	320	334

Annexure 1 – Device Locations

Device Name / Location	Current City	City
861480034766644	Village Pali	Korba
861480034786105	RSS nagar	Korba
861480034775850	Child Home Darri	Korba
861480034777765	Sirki Village	Korba
861480034765562	Gevra Mines Rehabilitated Area	Korba
861480034757130	Korba City, Patharipara	Korba
862649042673930	Balco Housing Board	Korba
861480034765406	Vijaynagar	Korba
861480034774176	Old Age Home, Near Sarvmangla Mandir	Korba
862649042685215	NTPC Jamnipalli Housing Colony	Korba
861480034781205	Raliya Village	Korba
861480034777179	Surakachar chowk (underground Mines)	Korba
861480034784340	Station road	Korba
861480034773236	Hardi Bazaar	Korba
862649042690587	Near BALCO Main Plant	Korba
861480034754749	Gud Deva	Korba
861480034766461	Delhi	Delhi
861480034784522	Delhi	Delhi
862649043466961	Delhi	Delhi
861480034785552	Delhi	Delhi
861480034766453	Delhi – since April 2023	Delhi

Some Graphs and Data for Devices Placed at Korba

- 861480034766644 - Relocated to Village Pali in October

Table - Monthly Average and Maximum AQI and HI

	Avg AQI	Avg HI	Max AQI	Max HI
Jan	426	19	1994	22
Feb	258	23	1326	34
May	128	40	1150	54
Jun	147	39	1033	54
Jul	85	36	560	50
Aug	102	34	558	53
Sep	163	35	394	53
Oct	312	30	6113	50
Nov	384	23	2001	49
Dec	349	22	1910	47
Jan-23	360	20	1998	28
Mar-23	182	32	1336	42
Apr-23	178	32	1646	43
May-23	162	37	1720	50
Jun-23	143	41	1315	54
Jul-23	44	43	388	53

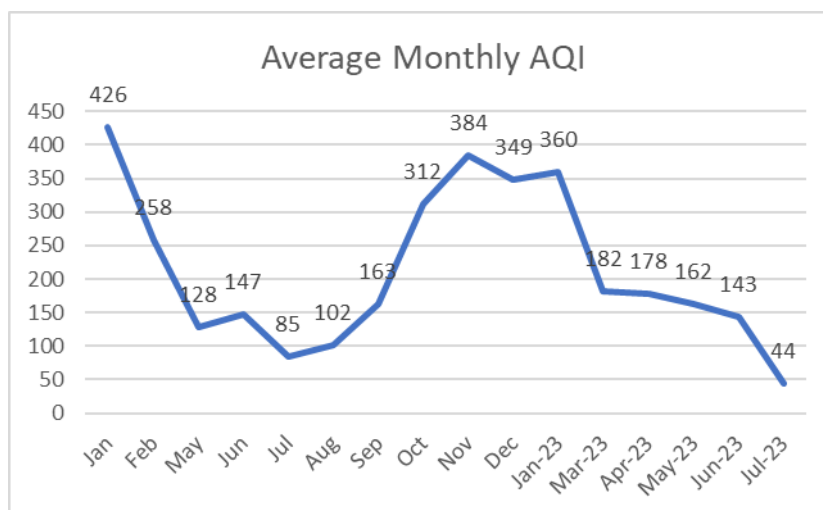


Table - AQI Categories Month Wise

	0-50	50-100	100-200	200-300	300-400	>400	Total
Jan				2	1	1	4
Feb			1	15	5		21
May		7	17				24
Jun		4	24	2			30
Jul	9	12	9				30
Aug	3	7	6	1			17
Sep			2				2

Oct			3	5	13	2	23
Nov					19	11	30
Dec			2	6	13	10	31
Jan-23				6	6	9	21
Mar-23			2	2			4
Apr-23		3	17	8	2		30
May-23		1	27	3			31
Jun-23		7	19	3	1		30
Jul-23	2						2

Table - Maximum AQI Time Intervals Wise (15 Minute Interval)

	Midnight to 6 AM	6 AM to 12 Noon	12 Noon to 6 PM	6 PM to Midnight
Jan	391		1994	1205
Feb	978	1221	514	1326
May	1003	507	1150	836
Jun	381	677	514	1033
Jul	409	413	560	423
Aug	412	451	369	558
Sep	48	277	327	394
Oct	889	6113	6113	1675
Nov	1538	2001	1988	1726
Dec	1174	1895	1910	1839
Jan-23	983	1954	1878	1998
Mar-23	342	1336	394	452
Apr-23	624	1646	1418	1579
May-23	1720	880	1288	1533
Jun-23	1315	1228	1158	1225
Jul-23	270	388	167	127

Table - Average AQI Time Interval Wise

	Midnight to 6 AM	6 AM to 12 Noon	12 Noon to 6 PM	6 PM to Midnight
Jan	237		340	474
Feb	234	318	121	364
May	132	145	90	148
Jun	141	175	105	167
Jul	62	88	85	103
Aug	74	117	87	131
Sep	26	132	194	187
Oct	241	366	295	343
Nov	338	434	342	424
Dec	308	401	287	398
Jan-23	296	424	294	425
Mar-23	209	229	104	190
Apr-23	184	232	90	198
May-23	187	177	90	187
Jun-23	155	159	95	158
Jul-23	37	61	34	42

Note - The device did not work between 21 Feb to 6 May 2022. Device did not work in Feb 2023

- 861480034786105 - RSS Nagar

Table - Monthly Average and Maximum AQI and HI

	Avg AQI	Avg HI	Max AQI	Max HI
Jan	298	18	1898	29
Feb	205	22	939	36
Mar	273	29	1225	44
Apr	238	36	1190	52
May	125	39	1205	58
Jun	134	39	1278	58
Jul	81	36	1010	62
Aug	102	34	963	58
Sep	119	34	730	60
Oct	179	29	1125	49
Nov	327	23	1115	38
Dec	317	21	1315	36
Jan-23	312	22	1781	40
Feb-23	217	25	1480	53
Mar-23	246	30	1310	57
Apr-23	194	34	1738	63
May-23	156	40	1380	71
Jun-23	118	42	1365	88
Jul-23	99	40	495	87

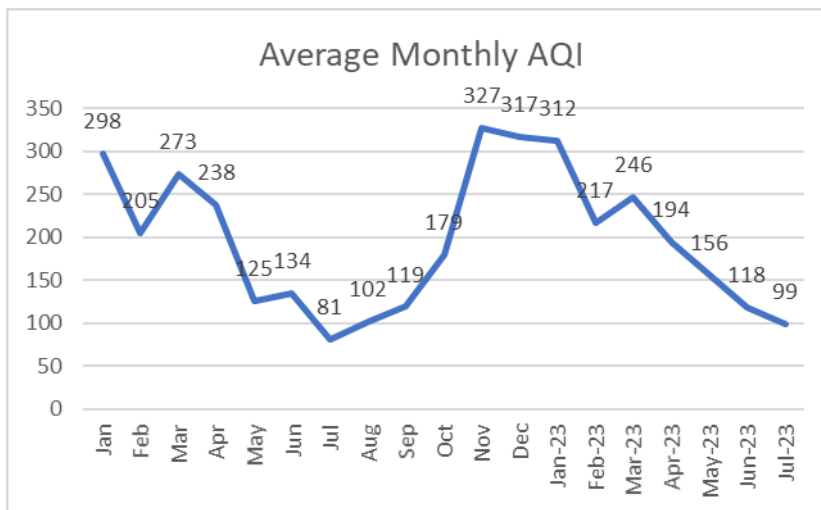


Table - AQI Categories Month Wise

	0-50	50-100	100-200	200-300	300-400	>400	Total
Jan				11	9		20
Feb			14	12	2		28
Mar			12	7	8	4	31
Apr			6	18	5	1	30
May		6	25				31
Jun		3	26	1			30
Jul	9	14	7				30
Aug	5	11	11	2			29

Sep	2	7	19	2			30
Oct	1	7	8	15			31
Nov				7	22	1	30
Dec			1	6	12	2	21
Jan-23			1	14	13	3	31
Feb-23		1	10	14	3		28
Mar-23			6	19	6		31
Apr-23		1	16	9	4		30
May-23		2	26	3			31
Jun-23	2	8	20				30
Jul-23	2	11	5	1			19

Table - Maximum AQI Time Intervals Wise

	Midnight to 6 AM	6 AM to 12 Noon	12 Noon to 6 PM	6 PM to Midnight
Jan	554	758	1898	1593
Feb	562	918	582	939
Mar	1060	1068	1225	1048
Apr	845	1103	1190	1118
May	628	1040	1030	1205
Jun	625	1118	1278	970
Jul	709	635	1010	505
Aug	359	963	394	629
Sep	330	578	377	730
Oct	494	705	363	1125
Nov	765	853	1115	1115
Dec	1203	1130	1180	1315
Jan-23	1033	844	840	1781
Feb-23	1144	1018	1095	1480
Mar-23	933	775	1310	1065
Apr-23	913	1470	875	1738
May-23	963	1380	1118	628
Jun-23	346	805	1365	563
Jul-23	331	495	325	445

Table - Average AQI Time Interval Wise

	Midnight to 6 AM	6 AM to 12 Noon	12 Noon to 6 PM	6 PM to Midnight
Jan	258	344	209	383
Feb	170	265	109	278
Mar	287	328	141	337
Apr	232	288	134	298
May	105	156	97	142
Jun	114	173	100	151
Jul	58	86	75	102
Aug	82	103	74	148
Sep	94	140	84	156
Oct	158	188	123	247
Nov	311	355	238	404
Dec	306	362	209	389
Jan-23	313	348	219	374

Feb-23	195	248	111	311
Mar-23	272	278	141	294
Apr-23	188	241	106	237
May-23	149	200	84	188
Jun-23	108	135	75	156
Jul-23	89	95	62	153

- 861480034775850 - Child Home Darri

Table - Monthly Average and Maximum AQI and HI

	Avg AQI	Avg HI	Max AQI	Max HI
Jan	293	19	694	28
Feb	175	23	1574	41
Mar	194	30	723	49
Apr	159	35	586	55
May	76	39	545	58
Jun	88	38	1225	59
Jul	65	34	466	54
Aug	77	33	726	57
Sep	80	33	547	54
Oct	134	30	1511	53
Nov	252	24	1275	43
Dec	219	22	985	41
Jan-23	232	22	928	43
Feb-23	141	25	998	45
Mar-23	154	28	1561	49
Apr-23	124	32	725	53
May-23	98	36	717	60
Jun-23	73	40	626	64
Jul-23	59	39	502	63
Aug-23	67	35	661	61
Sep-23	80	35	496	65

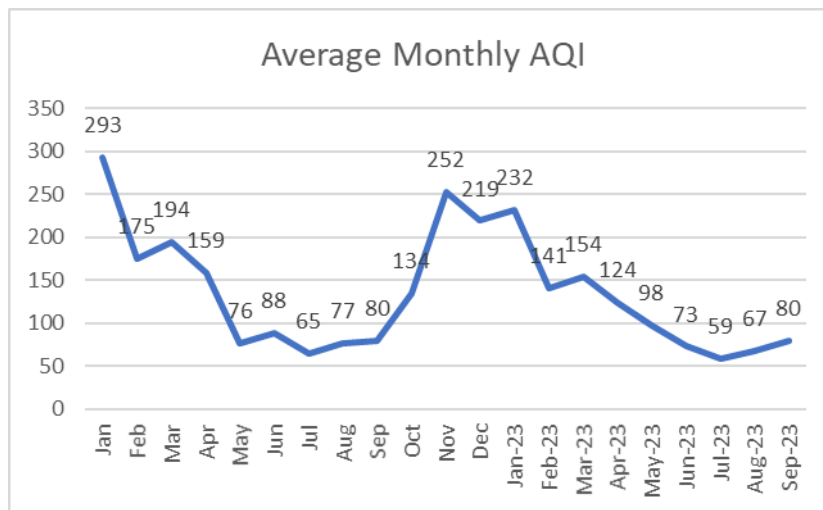


Table - AQI Categories Month Wise

	0-50	50-100	100-200	200-300	300-400	>400	Total
Jan		1		8	4	1	14
Feb		1	18	8	1		28
Mar		5	12	9	5		31
Apr		2	22	4	2		30
May	3	21	3				27

Jun	2	17	11			30
Jul	12	13	3			28
Aug	12	11	8			31
Sep	5	18	4			27
Oct	1	9	18	3		31
Nov			4	22	4	30
Dec		4	5	17	5	31
Jan-23			13	9	9	31
Feb-23	1	8	14	4	1	28
Mar-23		3	23	4	1	31
Apr-23		12	14	4		30
May-23		15	11	1		27
Jun-23	3	25	2			30
Jul-23	14	15	2			31
Aug-23	7	23	1			31
Sep-23	5	20	4	1		30

Table - Maximum AQI Time Intervals Wise

	Midnight to 6 AM	6 AM to 12 Noon	12 Noon to 6 PM	6 PM to Midnight
Jan	411	562	501	694
Feb	426	876	368	1574
Mar	582	723	418	628
Apr	469	586	333	583
May	367	417	436	545
Jun	433	1225	297	963
Jul	378	369	305	466
Aug	381	445	306	726
Sep	311	514	381	547
Oct	423	420	849	1511
Nov	393	675	751	1275
Dec	607	602	728	985
Jan-23	432	789	768	928
Feb-23	870	998	512	565
Mar-23	748	1561	329	793
Apr-23	581	512	217	725
May-23	447	524	307	717
Jun-23	458	530	342	626
Jul-23	302	392	325	502
Aug-23	552	420	318	661
Sep-23	358	342	320	496

Table - Average AQI Time Interval Wise

	Midnight to 6 AM	6 AM to 12 Noon	12 Noon to 6 PM	6 PM to Midnight
Jan	272	327	224	346
Feb	148	201	87	263
Mar	195	222	102	259
Apr	172	195	73	198
May	68	91	50	95
Jun	73	113	59	107

Jul	38	71	57	87
Aug	57	75	62	116
Sep	57	87	71	106
Oct	108	119	98	207
Nov	257	259	163	332
Dec	229	227	128	293
Jan-23	225	249	152	301
Feb-23	123	150	65	216
Mar-23	151	174	72	217
Apr-23	124	142	54	167
May-23	92	115	50	128
Jun-23	68	88	47	83
Jul-23	41	62	45	86
Aug-23	49	71	47	100
Sep-23	61	82	61	113

- 861480034777765- Sikri Village (Relocated to sikri in Feb 2023)

Table - Monthly Average and Maximum AQI and HI

	Avg AQI	Avg HI	Max AQI	Max HI
Jan	194	18	1543	28
Feb	157	22	1371	47
Mar	137	28	1281	43
Jul	43	42	103	52
Aug	91	38	694	51
Feb-23	303	26	1875	37
Mar-23	270	27	1466	42
Apr-23	217	34	908	44
May-23	178	37	1378	49
Jun-23	151	40	1264	53
Jul-23	110	37	869	55
Aug-23	106	32	1670	48
Sep-23	161	34	555	52

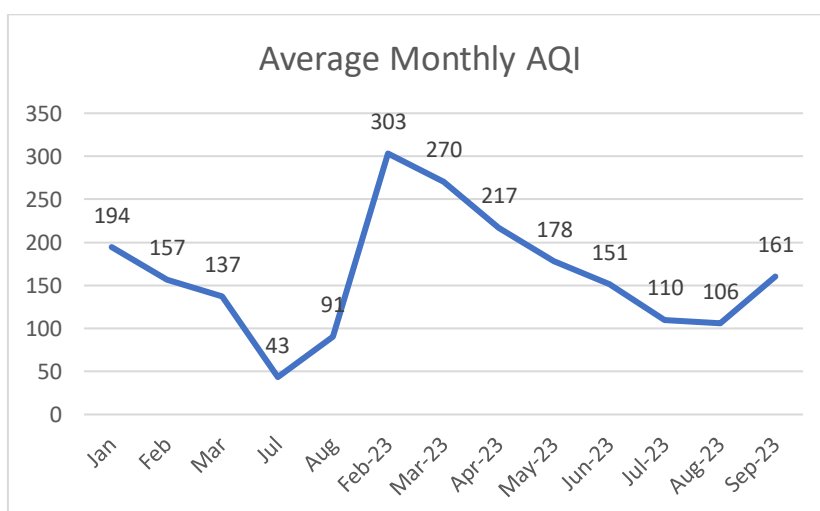


Table - AQI Categories Month Wise

	0-50	50-100	100-200	200-300	300-400	>400	Total
Jan			7	3	1		11
Feb		3	16	5			24
Mar		4	14	1	1		20
Jul	1						1
Aug	3	4	4				11
Feb-23				6	3	2	11
Mar-23			3	18	8	1	30
Apr-23			2	2	1		5
May-23	1	1	18	7			27
Jun-23		7	15	4	1		27
Jul-23		18	8	2			28
Aug-23	3	8	6	1			18
Sep-23	1	3	10	2	2		18

Table - Maximum AQI Time Intervals Wise

	Midnight to 6 AM	6 AM to 12 Noon	12 Noon to 6 PM	6 PM to Midnight
Jan	464	700	1543	1501
Feb	458	1179	1145	1371
Mar	405	884	392	1281
Jul	67	68	103	97
Aug	335	408	499	694
Feb-23	544	1875	628	1609
Mar-23	615	1466	1324	1408
Apr-23	635	908	360	522
May-23	1093	1378	556	776
Jun-23	874	1264	1036	520
Jul-23	452	841	869	587
Aug-23	350	368	1670	693
Sep-23	441	555	514	511

Table - Average AQI Time Interval Wise

	Midnight to 6 AM	6 AM to 12 Noon	12 Noon to 6 PM	6 PM to Midnight
Jan	164	209	100	306
Feb	133	174	81	234
Mar	122	126	76	220
Jul	36	41	40	59
Aug	61	101	101	102
Feb-23	268	310	165	464
Mar-23	256	302	171	355
Apr-23	289	248	98	231
May-23	214	208	86	212
Jun-23	182	155	97	168
Jul-23	90	118	89	140
Aug-23	80	100	123	121
Sep-23	146	170	158	168

- 861480034765562 - Gevra Mines Rehabilitated Area

Table - Monthly Average and Maximum AQI and HI

	Avg AQI	Avg HI	Max AQI	Max HI
Jan	350	20	1168	27
Feb	185	23	1640	39
Mar	212	29	1515	48
Apr	238	35	1040	52
May	98	38	1300	56
Jun	109	38	1156	52
Jul	66	36	939	56
Aug	69	35	633	49
Sep	74	36	1110	55
Oct	99	31	883	54
Nov	185	25	1220	38
Dec	230	23	1468	31
Jan-23	210	21	1228	28
Feb-23	131	25	1473	37
Mar-23	144	29	1090	40
Apr-23	92	32	1183	43
May-23	97	37	540	56
Jun-23	64	40	1250	54
Jul-23	47	40	1170	54
Aug-23	66	38	1263	54
Sep-23	194	39	430	60

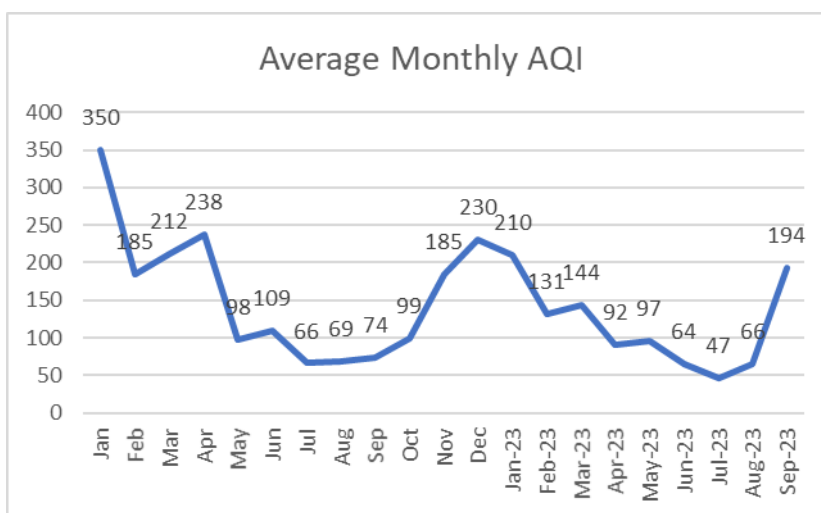


Table - AQI Categories Month Wise

	0-50	50-100	100-200	200-300	300-400	>400	Total
Jan					1		1
Feb			17	9	1		27
Mar		1	14	10	6		31
Apr			7	13	5		25
May	1	14	13				28

Jun		15	14	1			30
Jul	11	17	3				31
Aug	15	11	5				31
Sep	6	15	3				24
Oct	5	10	16				31
Nov			11	7			18
Dec			8	8	5		21
Jan-23		1	9	5	4		19
Feb-23		7	17	4			28
Mar-23		6	21	4			31
Apr-23		11	4				15
May-23		17	14				31
Jun-23	12	16	2				30
Jul-23	18	13					31
Aug-23	15	10	4	2			31
Sep-23			15	10			25

Table - Maximum AQI Time Intervals Wise

	Midnight to 6 AM	6 AM to 12 Noon	12 Noon to 6 PM	6 PM to Midnight
Jan			267	1168
Feb	750	1448	1248	1640
Mar	550	1515	1415	1064
Apr	1040	546	463	1020
May	330	970	798	1300
Jun	1114	598	358	1156
Jul	522	939	619	673
Aug	277	633	409	485
Sep	227	450	1110	728
Oct	883	706	585	443
Nov	362	589	1220	414
Dec	428	1468	1164	993
Jan-23	1015	568	993	1228
Feb-23	675	1135	1473	417
Mar-23	474	905	452	1090
Apr-23	345	634	645	1183
May-23	327	400	308	540
Jun-23	335	398	1250	351
Jul-23	348	336	542	1170
Aug-23	1263	447	1173	385
Sep-23	337	430	391	362

Table - Average AQI Time Interval Wise

	Midnight to 6 AM	6 AM to 12 Noon	12 Noon to 6 PM	6 PM to Midnight
Jan			81	519
Feb	179	194	99	271
Mar	214	231	126	278
Apr	265	284	140	249
May	93	111	69	120

Jun	110	125	70	131
Jul	46	85	62	72
Aug	51	79	65	84
Sep	50	87	80	82
Oct	75	100	83	147
Nov	150	187	155	257
Dec	210	242	159	313
Jan-23	200	221	158	275
Feb-23	101	116	76	222
Mar-23	134	163	90	191
Apr-23	89	119	63	96
May-23	109	110	49	117
Jun-23	63	71	49	72
Jul-23	39	52	39	57
Aug-23	67	63	55	76
Sep-23	181	195	185	212

- 861480034757130 - Korba City

Table - Monthly Average and Maximum AQI and HI

	Avg AQI	Avg HI	Max AQI	Max HI
Jan	393	19	1984	24
Feb	252	23	1243	46
Mar	275	25	413	31
Apr	165	37	1305	50
May	119	40	1210	59
Jun	132	39	445	53
Jul	96	36	1965	53
Aug	58	34	1455	44
Sep	71	35	1278	45
Oct	85	32	3158	44
Nov	158	22	885	41
Dec	150	22	1260	37
Jan-23	157	23	1463	39
Feb-23	137	24	1283	42
Mar-23	167	28	1235	47
Apr-23	120	30	1418	52
May-23	116	37	1420	57
Jun-23	101	40	1323	58
Jul-23	89	38	143	41
Sep-23	62	27	133	34

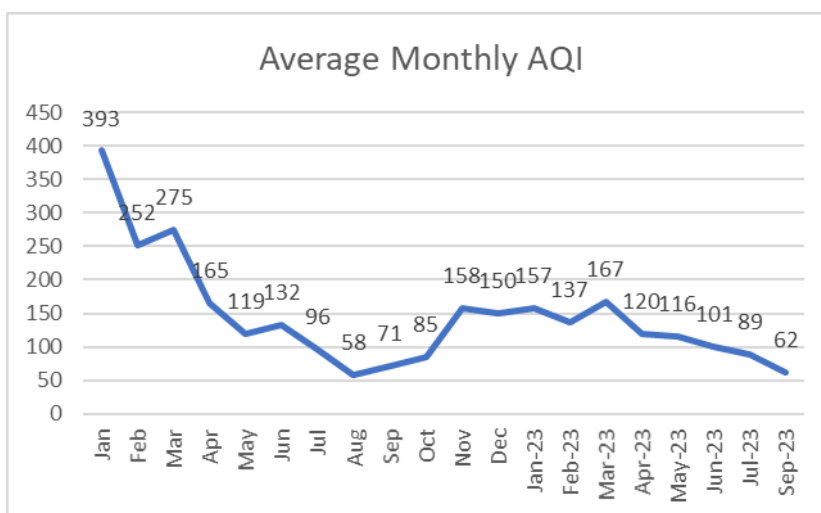


Table - AQI Categories Month Wise

	0-50	50-100	100-200	200-300	300-400	>400	Total
Jan			2	1	3	1	7
Feb		1	3	21	3		28
Mar			1			1	2
Apr			5				5
May		7	17				24
Jun		3	12	1			16

Jul	3	6	3	1		13
Aug	12	11	2			25
Sep	5	22	3			30
Oct	3	10	7			20
Nov		1	14	1		16
Dec		3	23	2		28
Jan-23			18	3		21
Feb-23		5	20	3		28
Mar-23	1	4	19	6	1	31
Apr-23		17	8	4	1	30
May-23	2	8	21			31
Jun-23	2	9	8			19
Jul-23	1		1			2
Sep-23	3	1				4

Table – Maximum AQI Time Intervals Wise

	Midnight to 6 AM	6 AM to 12 Noon	12 Noon to 6 PM	6 PM to Midnight
Jan	367	387	1984	1369
Feb	368	923	1243	1011
Mar	0	137		413
Apr	598	955	328	1305
May	933	1210	1175	389
Jun	207	445	429	435
Jul	808	1233	1965	385
Aug	948	468	1348	1455
Sep	1100	435	673	1278
Oct	609	3158	1303	1280
Nov	306	885	810	585
Dec	1260	1185	918	885
Jan	320	1463	1273	1048
Feb-23	335	1238	1283	821
Mar-23	1113	663	1140	1235
Apr-23	1290	865	1418	455
May-23	1328	1178	1420	1253
Jun-23	1190	1308	1323	835
Jul-23				143
Sep-23				133

Table - Average AQI Time Interval Wise

	Midnight to 6 AM	6 AM to 12 Noon	12 Noon to 6 PM	6 PM to Midnight
Jan	282	364	334	445
Feb	209	328	127	340
Mar		137		413
Apr	117	244	87	212
May	97	134	104	140
Jun	93	159	112	162
Jul	52	95	128	114
Aug	40	49	56	82

Sep	43	76	64	100
Oct	51	103	72	114
Nov	107	209	100	215
Dec	114	194	102	189
Jan	100	198	109	213
Feb-23	88	173	79	196
Mar-23	166	204	102	191
Apr-23	108	157	77	131
May-23	91	152	91	127
Jun-23	72	138	87	107
Jul-23				89
Sep-23				62

- 862649042673930- Balco Housing Area

Table - Monthly Average and Maximum AQI and HI

	Average AQI	Average HI	Maximum AQI	Maximum HI
Jan	240	17	770	26
Feb	137	23	958	52
Mar	215	31	1059	62
Apr	181	38	703	70
May	86	44	335	76
Jun	86	42	306	77
Oct	73	44	123	53
Nov	221	20	1005	43
Dec	202	21	1418	44
Jan-23	218	21	565	46
Feb-23	160	23	1368	51
Mar-23	177	29	791	64
Apr-23	144	34	565	77

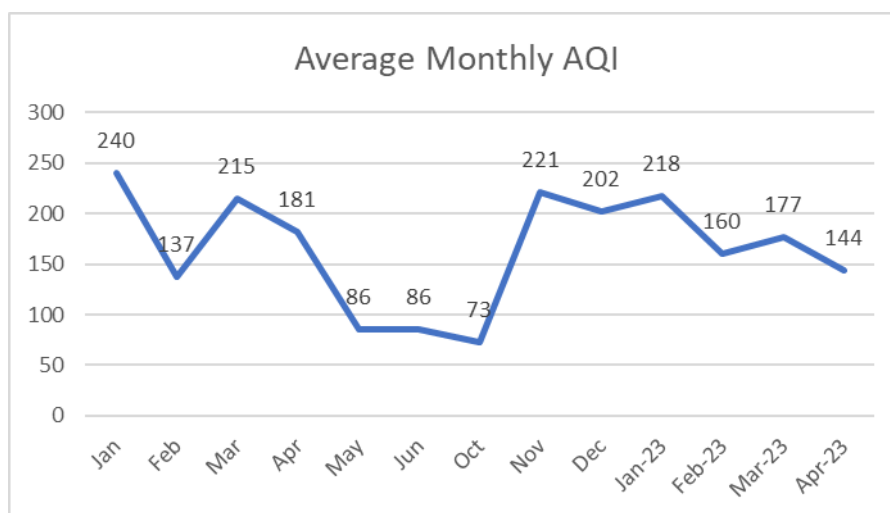


Table - AQI Categories Month Wise

	0-50	50-100	100-200	200-300	300-400	>400	Total
Jan			5	15	8	3	31
Feb		6	18	4			28
Mar		7	10	8	2	4	31
Apr		2	19	5	3	1	30
May		15	6				21
Jun		10	6				16
Oct		1					1
Nov			5	10	5		20
Dec		1	14	15	1		31
Jan-23			14	11	6		31
Feb-23	1	4	17	5	1		28

Mar-23		4	18	7	2		31
Apr-23		9	11	5			25

Table - Maximum AQI Time Intervals Wise

	Midnight to 6 AM	6 AM to 12 Noon	12 Noon to 6 PM	6 PM to Midnight
Jan	475	770	352	701
Feb	364	836	277	958
Mar	1059	1019	394	824
Apr	703	559	336	519
May	240	328	240	335
Jun	300	306	233	302
Oct		123		
Nov	451	471	925	1005
Dec	477	534	843	1418
Jan	465	427	420	565
Feb-23	1368	614	328	951
Mar-23	791	560	396	588
Apr-23	565	511	313	435

Table - Average AQI Time Interval Wise

	Midnight to 6 AM	6 AM to 12 Noon	12 Noon to 6 PM	6 PM to Midnight
Jan	215	292	128	307
Feb	118	169	76	186
Mar	252	248	117	242
Apr	190	229	109	197
May	85	85	77	96
Jun	94	112	59	81
Oct		73		
Nov	177	222	171	312
Dec	178	202	136	294
Jan	223	213	158	276
Feb-23	205	154	75	201
Mar-23	205	183	108	210
Apr-23	166	172	80	157

- 861480034765406 - Kusmunda Mines Area

Table - Monthly Average and Maximum AQI and HI

	Avg AQI	Avg HI	Max AQI	Max HI
Jan	221	18	1555	25
Feb	258	25	1683	52
Mar	260	32	1774	60
Apr	319	37	1921	49
May	179	40	1996	61
Jun	200	40	1969	55
Jul	157	37	1984	50
Aug	168	36	1955	53
Sep	184	41	452	44
Oct	176	30	8675	42
Nov	279	24	1948	31
Jan-23	342	23	1979	33
Feb-23	236	24	1980	36
Mar-23	226	28	1903	48
Apr-23	193	34	1541	55
May-23	180	38	1715	67
Jun-23	130	41	1631	72
Jul-23	97	40	606	79

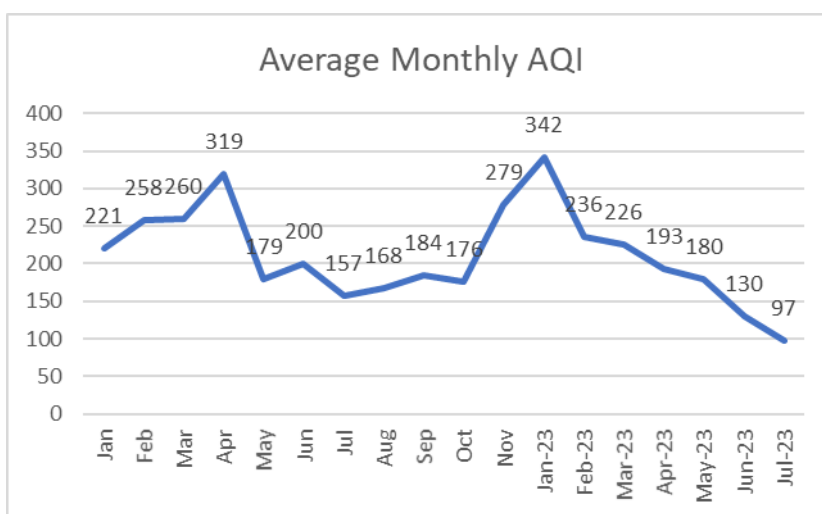


Table - AQI Categories Month Wise

	0-50	50-100	100-200	200-300	300-400	>400	Total
Jan		1	8	7	4		20
Feb			5	17	4	1	27
Mar			10	9	2	5	26
Apr				14	12	4	30
May			20	9			29
Jun			14	16			30
Jul		6	21	4			31
Aug		4	16	10	1		31

Sep			2				2
Oct		1	17	2	1		21
Nov			2	12	9	1	24
Jan-23			1	6	5	5	17
Feb-23			10	11	7		28
Mar-23			11	16	4		31
Apr-23	1		12	6	2		21
May-23		4	16	11			31
Jun-23	2	9	15	4			30
Jul-23	18	2	3	1			24

Table - Maximum AQI Time Intervals Wise

	Midnight to 6 AM	6 AM to 12 Noon	12 Noon to 6 PM	6 PM to Midnight
Jan	434	497	580	1555
Feb	590	1428	1683	1646
Mar	660	1371	1234	1774
Apr	936	1921	1816	1725
May	508	1730	1996	1013
Jun	681	1969	1853	1169
Jul	492	1984	1786	1261
Aug	427	1955	1853	946
Sep	270	452	308	414
Oct	427	835	766	8675
Nov	457	720	1489	1948
Jan	881	1733	876	1979
Feb-23	1155	1219	1648	1980
Mar-23	1558	1751	1676	1903
Apr-23	759	1541	458	1400
May-23	1238	1715	543	1355
Jun-23	913	1421	487	1631
Jul-23	466	364	493	606

Table - Average AQI Time Interval Wise

	Midnight to 6 AM	6 AM to 12 Noon	12 Noon to 6 PM	6 PM to Midnight
Jan	181	234	119	342
Feb	170	283	159	421
Mar	183	304	174	383
Apr	265	402	245	367
May	116	249	169	182
Jun	117	291	210	183
Jul	65	241	179	139
Aug	83	219	200	169
Sep	103	241	164	292
Oct	99	159	101	340
Nov	201	276	210	445
Jan	294	383	212	478
Feb-23	189	192	100	458
Mar-23	201	239	124	339

Apr-23	204	212	88	267
May-23	192	191	75	252
Jun-23	143	137	66	168
Jul-23	192	47	82	100

- 861480034774176 - Old Age Home near Sarvmangla Mandir

Table - Monthly Average and Maximum AQI and HI

	Average AQI	Average HI	Maximum AQI	Maximum HI
Feb	116	21	686	51
Mar	199	28	1043	52
Apr	165	34	666	51
May	73	37	438	50
Jul	35	39	318	44
Sep	93	31	367	41
Oct	176	31	1419	56
Nov	322	24	1138	46
Dec	280	23	1149	41
Jan_23	257	22	1749	43
Feb-23	188	25	1464	44
Mar-23	175	28	1558	50
Apr-23	95	31	466	51
May-23	39	23	65	25

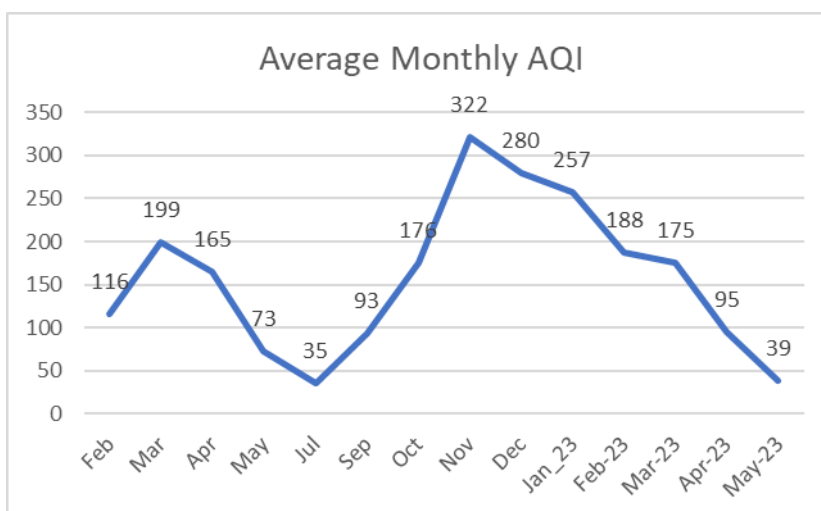


Table - AQI Categories Month Wise

	0-50	50-100	100-200	200-300	300-400	>400	Total
Feb		10	14	1			25
Mar		10	7	8	3	3	31
Apr		5	15	6	2		28
May	2	9	3				14
Jul	4	1					5
Sep		2	1				3
Oct		4	16	8			28
Nov				8	22		30
Dec			6	13	12		31
Jan_23			8	13	10		31

Feb-23		3	16	7	2		28
Mar-23		2	20	9			31
Apr-23		9	3				12
May-23	1						1

Table - Maximum AQI Time Intervals Wise

	Midnight to 6 AM	6 AM to 12 Noon	12 Noon to 6 PM	6 PM to Midnight
Feb	383	556	514	686
Mar	1043	939	385	856
Apr	666	592	329	437
May	263	438	273	280
Jul	17	95	43	318
Sep	283	367	342	338
Oct	626	1061	1419	550
Nov	1138	988	431	728
Dec	805	828	474	1149
Jan	504	924	1749	700
Feb-23	655	1400	1464	713
Mar-23	1558	998	527	565
Apr-23	383	409	466	453
May-23				65

Table - Average AQI Time Interval Wise

	Midnight to 6 AM	6 AM to 12 Noon	12 Noon to 6 PM	6 PM to Midnight
Feb	106	126	65	165
Mar	249	209	91	244
Apr	192	200	81	187
May	77	79	58	79
Jul	13	25	16	52
Sep	58	143	72	101
Oct	174	200	114	215
Nov	343	343	232	367
Dec	302	307	171	336
Jan	262	287	169	303
Feb-23	172	228	88	246
Mar-23	189	210	89	209
Apr-23	85	101	63	126
May-23				39

- 862649042685215 - NTPC Jamnipalli

Table - Monthly Average and Maximum AQI and HI

	Average AQI	Average HI	Maximum AQI	Maximum HI
Feb	152	22	1369	33
Mar	193	28	1343	43
Apr	179	36	764	51
Jun	84	37	537	56
Jul	72	34	338	51
Aug	37	34	365	50
Sep	66	34	383	52
Oct	61	29	496	46
Nov	99	21	568	32
Dec	119	21	981	29
Jan	133	18	1275	28
Mar-23	86	30	377	45
Apr-23	74	31	496	46
May-23	66	33	430	51

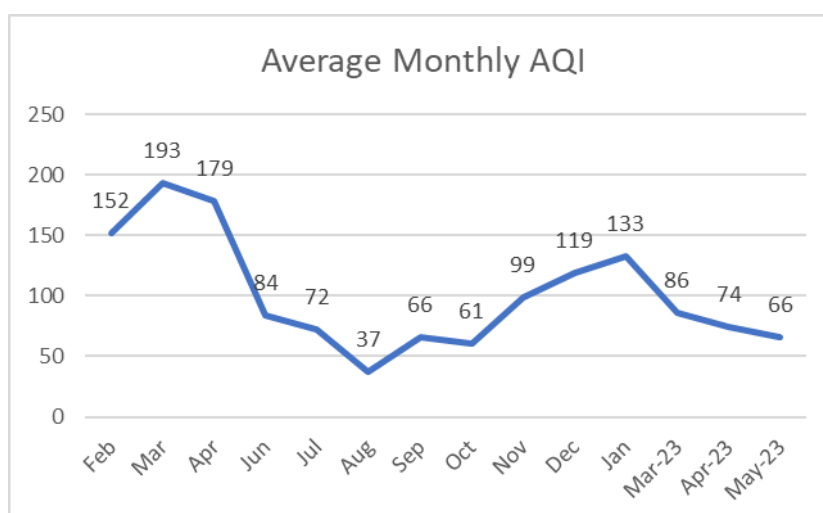


Table - AQI Categories Month Wise

	0-50	50-100	100-200	200-300	300-400	>400	Total
Feb		1	19	3			23
Mar		6	11	6	3	2	28
Apr			10	1			11
Jun	1	16	6				23
Jul	1	5					6
Aug	8	2					10
Sep	1	4	1				6
Oct	12	12	1				25
Nov		16	8				24
Dec		9	14				23
Jan		7	9	2			18
Mar-23		2	1				3

Apr-23	10	15	5				30
May-23	4	12	1				17

Table - Maximum AQI Time Intervals Wise

	Midnight to 6 AM	6 AM to 12 Noon	12 Noon to 6 PM	6 PM to Midnight
Feb	351	619	313	1369
Mar	718	861	346	1343
Apr	385	443	431	764
Jun	458	365	336	537
Jul	150	287	338	325
Aug	167	365	163	314
Sep	200	383	157	341
Oct	325	429	335	496
Nov	326	360	442	568
Dec	353	418	380	981
Jan	372	1275	489	591
Feb-23				
Mar-23	377	300	167	316
Apr-23	496	473	352	399
May-23	331	395	312	430

Table - Average AQI Time Interval Wise

	Midnight to 6 AM	6 AM to 12 Noon	12 Noon to 6 PM	6 PM to Midnight
Feb	139	176	83	207
Mar	186	231	111	243
Apr	187	238	86	207
Jun	78	108	61	90
Jul	46	70	77	100
Aug	29	41	35	42
Sep	65	56	47	96
Oct	50	61	54	76
Nov	86	101	83	121
Dec	99	141	91	141
Jan	115	154	109	151
Feb-23				
Mar-23	96	98	67	88
Apr-23	84	87	47	76
May-23	62	76	43	78

- **861480034777179 Surakachar chowk (underground Mines)** – Installed in October 2022

Table - Monthly Average and Maximum AQI and HI

	Avg AQI	Avg HI	Max AQI	Max HI
Oct	370	29	1371	45
Nov	428	22	1620	36
Dec	443	21	1168	30
Jan	382	22	850	32
Feb-23	404	23	1180	35
Mar-23	375	27	733	46
Apr-23	385	31	1928	46
May-23	191	36	1303	53
Jun-23	102	40	1448	55
Jul-23	43	36	1215	53

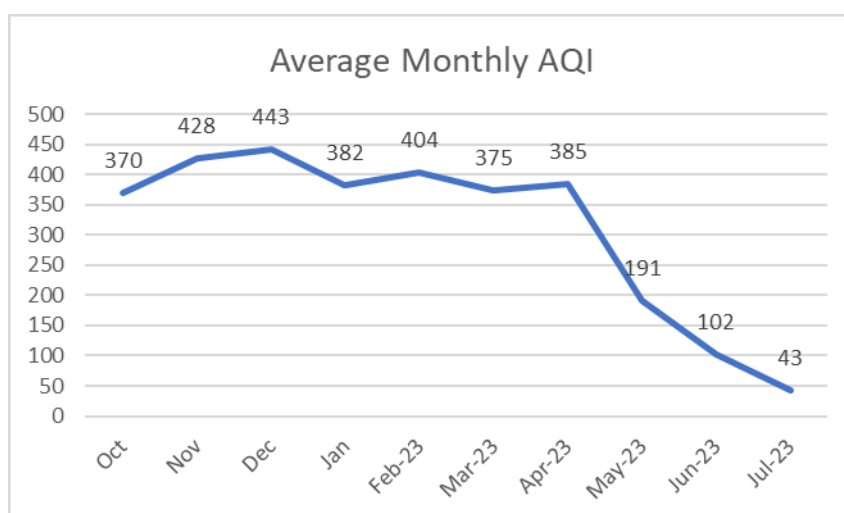


Table - AQI Categories Month Wise

	0-50	50-100	100-200	200-300	300-400	>400	Total
Oct			1	3	17	6	27
Nov					9	21	30
Dec					5	19	24
Jan					17		17
Feb-23					11	17	28
Mar-23					27	4	31
Apr-23					22	8	30
May-23		10	7	1	10	2	30
Jun-23		7	7				14
Jul-23	13	2					15

Table - Maximum AQI Time Intervals Wise

	Midnight to 6 AM	6 AM to 12 Noon	12 Noon to 6 PM	6 PM to Midnight
Oct	646	701	652	1371

Nov	804	1228	948	1620
Dec	585	826	916	1168
Jan	483	610	546	850
Feb-23	586	1180	668	710
Mar-23	483	610	546	850
Apr-23	678	1928	840	635
May-23	1303	878	733	718
Jun-23	522	940	1448	1433
Jul-23	213	1215	170	421

Table - Average AQI Time Interval Wise

	Midnight to 6 AM	6 AM to 12 Noon	12 Noon to 6 PM	6 PM to Midnight
Oct	332	355	342	439
Nov	383	425	459	459
Dec	436	438	395	487
Jan	368	384	361	412
Feb-23	400	405	386	423
Mar-23	368	384	361	412
Apr-23	380	379	386	396
May-23	203	191	173	193
Jun-23	89	104	58	142
Jul-23	27	53	33	57

- 861480034784340 Kanha Auto repairs, Station road – Installed in October 2022

Table - Monthly Average and Maximum AQI and HI

	Avg AQI	Avg HI	Max AQI	Max HI
Oct	218	27	2295	46
Nov	331	21	1300	31
Dec	326	20	1948	29
Jan	281	19	1666	30
Feb-23	202	23	1369	32
Mar-23	186	27	1131	43
Apr-23	157	31	945	44
May-23	134	34	1113	50
Jun-23	87	39	1043	56
Jul-23	54	38	715	52
Aug-23	75	34	1060	51
Sep-23	74	34	1315	50

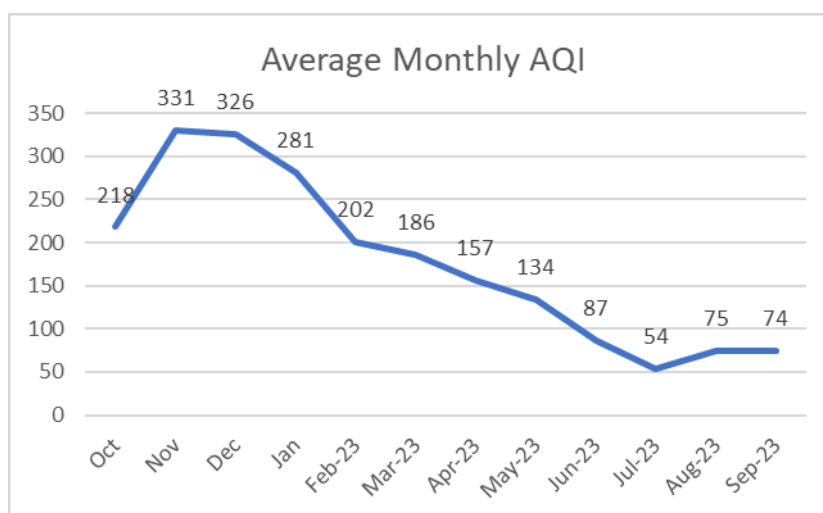


Table - AQI Categories Month Wise

	0-50	50-100	100-200	200-300	300-400	>400	Total
Oct			9	13		1	23
Nov			2	5	14	4	25
Dec			2	7	15	7	31
Jan			3	11	16	1	31
Feb-23		1	12	14	1		28
Mar-23		2	18	11			31
Apr-23		4	20	6			30
May-23		3	22				25
Jun-23	2	18	7	1			28
Jul-23	14	16					30
Aug-23	4	24	2				30

Sep-23	7	18	5			30
--------	---	----	---	--	--	----

Table - Maximum AQI Time Intervals Wise

	Midnight to 6 AM	6 AM to 12 Noon	12 Noon to 6 PM	6 PM to Midnight
Oct	674	1083	1083	2295
Nov	808	1073	1029	1300
Dec	841	1948	1121	1714
Jan	552	1666	603	1165
Feb-23	623	597	389	1369
Mar-23	515	1131	551	720
Apr-23	409	484	349	945
May-23	717	1113	1080	1088
Jun-23	1043	980	398	722
Jul-23	352	715	382	392
Aug-23	331	1060	331	677
Sep-23	763	566	1315	1063

Table - Average AQI Time Interval Wise

	Midnight to 6 AM	6 AM to 12 Noon	12 Noon to 6 PM	6 PM to Midnight
Oct	148	209	163	347
Nov	285	325	257	451
Dec	286	332	197	478
Jan	232	312	191	379
Feb-23	181	199	78	342
Mar-23	172	202	106	261
Apr-23	156	185	90	197
May-23	117	156	75	185
Jun-23	77	106	57	102
Jul-23	38	70	49	59
Aug-23	55	105	61	77
Sep-23	60	88	68	79

- 861480034773236 - Hardi Bazaar Installed in October 2022

Table - Monthly Average and Maximum AQI and HI

	Avg AQI	Avg HI	Max AQI	Max HI
Oct	141	26	1491	49
Nov	171	23	865	31
Dec	223	22	1908	28
Jan	228	21	1659	29
Feb-23	145	24	1940	31
Mar-23	100	29	1590	39
Apr-23	141	31	1213	41
May-23	111	35	1086	47
Jun-23	82	39	1028	53
Jul-23	46	36	1145	47
Aug-23	53	33	878	41
Sep-23	76	32	1125	46

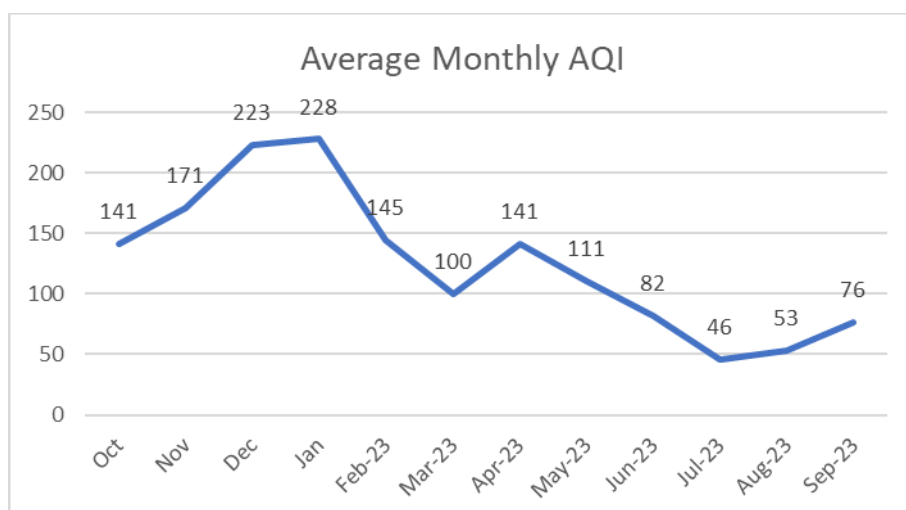


Table - AQI Categories Month Wise

	0-50	50-100	100-200	200-300	300-400	>400	Total
Oct	2	4	12	4		1	23
Nov	3	6	10	11			30
Dec		2	7	15	7		31
Jan		1	13	10	6	1	31
Feb-23		8	16	3	1		28
Mar-23	1	8	5	1			15
Apr-23		11	13	6			30
May-23	1	9	21				31
Jun-23	5	20	5				30
Jul-23	19	12					31
Aug-23	14	16	1				31
Sep-23	6	19	4				29

Table - Maximum AQI Time Intervals Wise

	Midnight to 6 AM	6 AM to 12 Noon	12 Noon to 6 PM	6 PM to Midnight
Oct	1491	801	796	846
Nov	397	729	443	865
Dec	562	878	507	1908
Jan	829	1291	1475	1659
Feb-23	758	1393	1621	1940
Mar-23	406	1131	1590	475
Apr-23	532	575	1213	1046
May-23	502	860	370	1086
Jun-23	480	691	810	1028
Jul-23	1120	689	1145	768
Aug-23	878	544	825	648
Sep-23	1125	938	413	586

Table - Average AQI Time Interval Wise

	Midnight to 6 AM	6 AM to 12 Noon	12 Noon to 6 PM	6 PM to Midnight
Oct	139	138	94	192
Nov	175	173	117	218
Dec	223	248	134	287
Jan	228	250	156	279
Feb-23	146	142	71	200
Mar-23	87	99	74	131
Apr-23	152	168	76	165
May-23	118	149	49	122
Jun-23	84	101	48	88
Jul-23	31	57	39	56
Aug-23	50	62	42	56
Sep-23	70	102	58	72

- 862649042690587 Near BALCO Main Road – Installed in October 2022

Table - Monthly Average and Maximum AQI and HI

	Avg AQI	Avg HI	Max AQI	Max HI
Oct	181	31	926	53
Nov	254	21	659	40
Dec	223	22	516	42
Jan	246	21	626	44
Feb-23	131	23	449	43
Mar-23	154	32	536	49
Apr-23	149	32	561	58
May-23	92	35	356	61
Jun-23	71	39	436	72
Jul-23	53	38	415	76
Aug-23	65	32	337	59
Sep-23	67	34	334	66

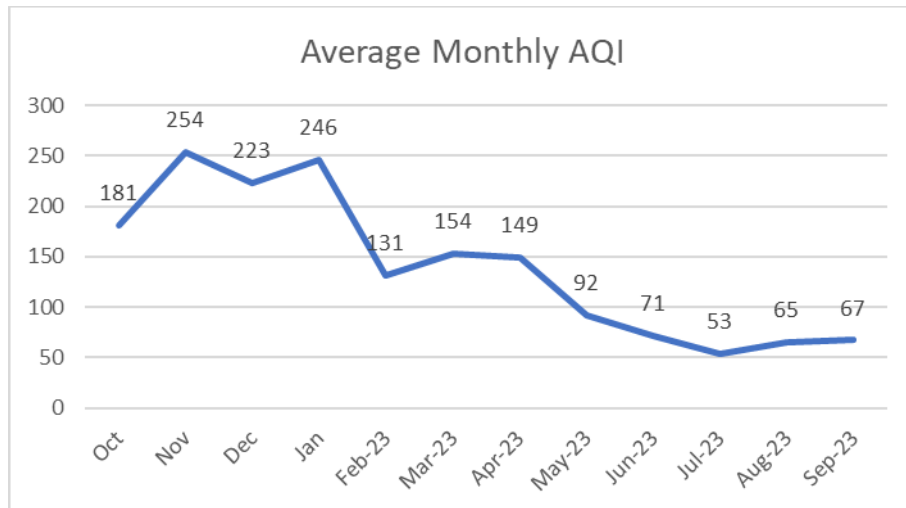


Table - AQI Categories Month Wise

	0-50	50-100	100-200	200-300	300-400	>400	Total
Oct		2	9	6		1	18
Nov				18	1		19
Dec		2	10	15	4		31
Jan			8	15	8		31
Feb-23		1	9				10
Mar-23		1	2			1	4
Apr-23		9	13	4	2		28
May-23	1	13	10				24
Jun-23	3	23	3				29
Jul-23	18	11	2				31
Aug-23	6	17	2				25
Sep-23	11	16	3				30

Table - Maximum AQI Time Intervals Wise

	Midnight to 6 AM	6 AM to 12 Noon	12 Noon to 6 PM	6 PM to Midnight
Oct	358	613	581	926
Nov	397	434	383	659
Dec	394	516	418	508
Jan	453	626	511	506
Feb-23	329	449	345	432
Mar-23	333	335	314	536
Apr-23	508	561	318	442
May-23	342	356	307	332
Jun-23	305	436	233	310
Jul-23	322	250	351	415
Aug-23	170	337	243	305
Sep-23	267	331	320	334

Table - Average AQI Time Interval Wise

	Midnight to 6 AM	6 AM to 12 Noon	12 Noon to 6 PM	6 PM to Midnight
Oct	117	164	145	279
Nov	256	272	175	298
Dec	222	251	151	269
Jan	243	268	181	287
Feb-23	117	149	67	194
Mar-23	211	173	106	129
Apr-23	169	172	77	179
May-23	97	102	57	102
Jun-23	74	76	57	77
Jul-23	45	47	52	70
Aug-23	55	70	61	73
Sep-23	58	80	58	70

- 861480034754749 Gud Deva Coal Siding – Installed in October 2022

Table - Monthly Average and Maximum AQI and HI

	Avg AQI	Avg HI	Max AQI	Max HI
Oct	216	27	1906	53
Nov	325	23	1990	37
Dec	346	21	1974	33
Jan	355	21	1994	33
Feb-23	259	24	1984	37
Mar-23	248	28	1884	48
Apr-23	154	32	1968	49
May-23	123	36	1285	57
Jun-23	98	40	1978	63
Jul-23	82	38	1916	56
Aug-23	74	35	1979	55
Sep-23	93	34	2180	60

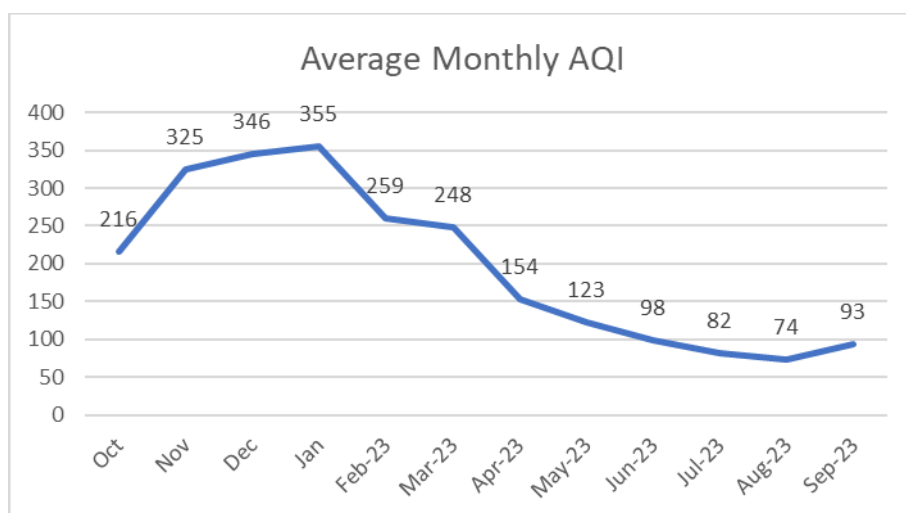


Table - AQI Categories Month Wise

	0-50	50-100	100-200	200-300	300-400	>400	Total
Oct		1	5	7	3	1	17
Nov				8	20	2	30
Dec			2	7	11	9	29
Jan				10	13	8	31
Feb-23			8	11	8	1	28
Mar-23			8	16	7		31
Apr-23		10	12	8			30
May-23	1	10	19	1			31
Jun-23	4	14	12				30
Jul-23	5	16	9				30
Aug-23	10	13	8				31
Sep-23	3	13	13				29

Table - Maximum AQI Time Intervals Wise

	Midnight to 6 AM	6 AM to 12 Noon	12 Noon to 6 PM	6 PM to Midnight
Oct	511	1249	1906	1801
Nov	1958	1851	1990	1839
Dec	1884	1744	1974	1933
Jan	1921	1946	1990	1994
Feb-23	1984	1913	1923	1915
Mar-23	1884	1474	1845	1473
Apr-23	1968	1258	1274	1860
May-23	868	1285	586	550
Jun-23	1978	1303	1696	603
Jul-23	1916	1313	1713	597
Aug-23	1979	565	1613	556
Sep-23	899	1525	2180	776

Table - Average AQI Time Interval Wise

	Midnight to 6 AM	6 AM to 12 Noon	12 Noon to 6 PM	6 PM to Midnight
Oct	138	192	157	353
Nov	283	327	273	411
Dec	303	319	279	483
Jan	293	378	278	472
Feb-23	238	250	144	397
Mar-23	251	272	166	301
Apr-23	155	175	87	193
May-23	143	129	61	142
Jun-23	110	102	75	99
Jul-23	91	84	88	66
Aug-23	57	68	81	88
Sep-23	63	95	104	102